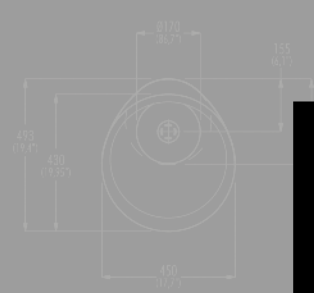
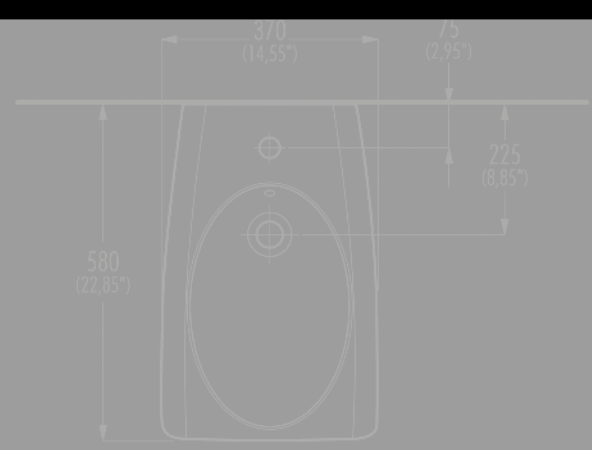
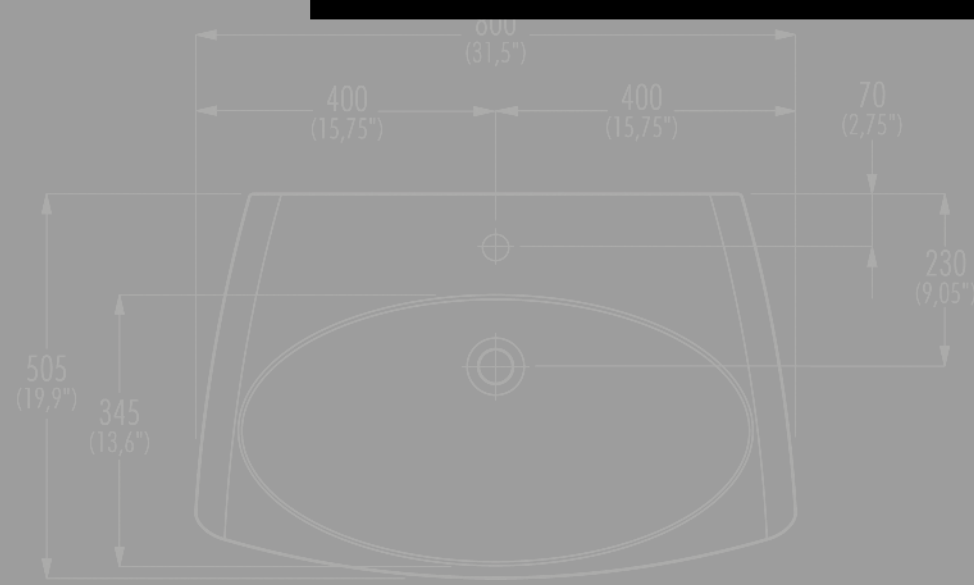
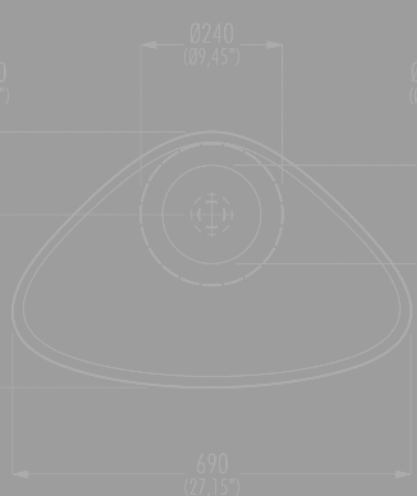


plav isodesign

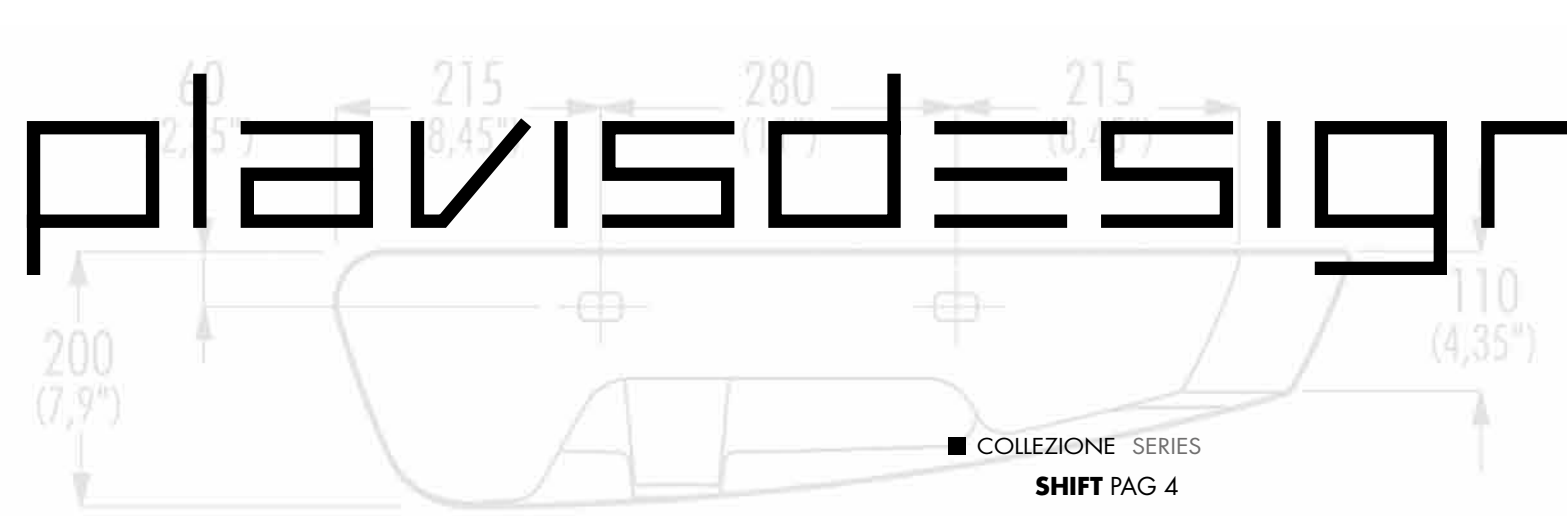
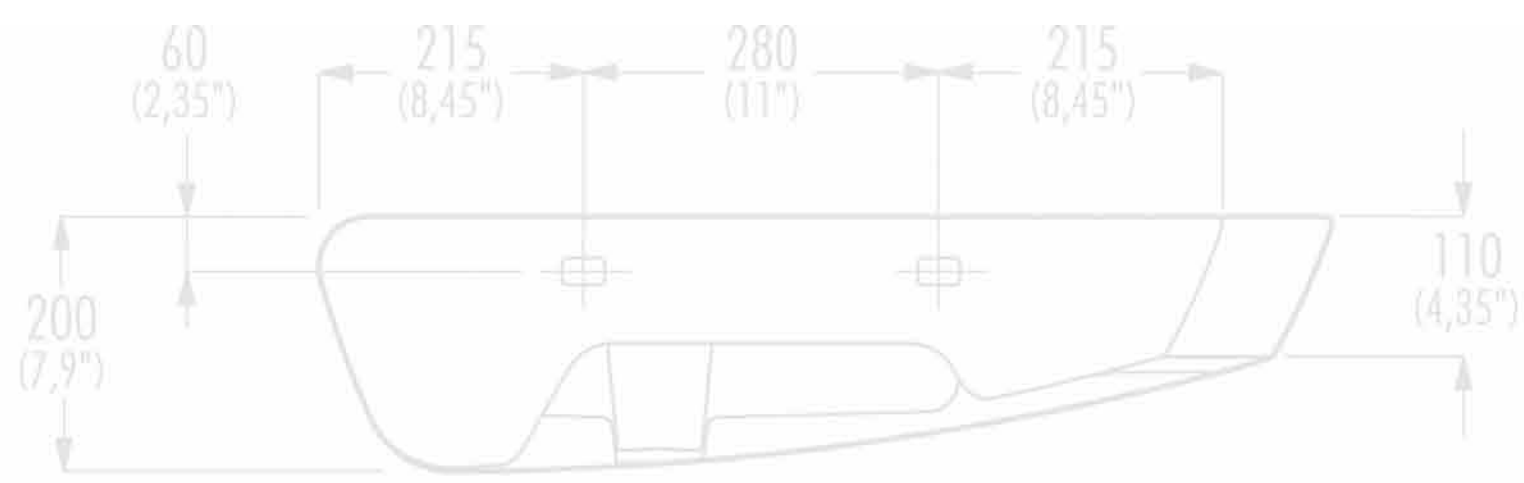


LISTINO PREZZI

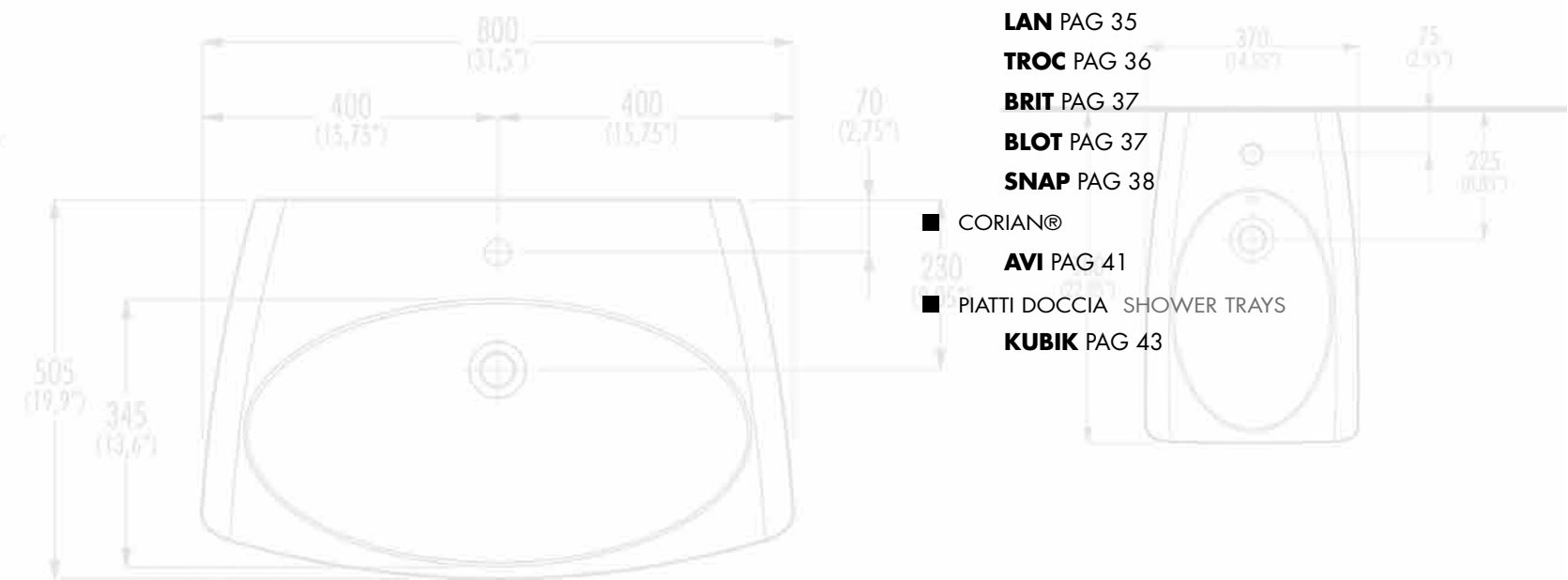
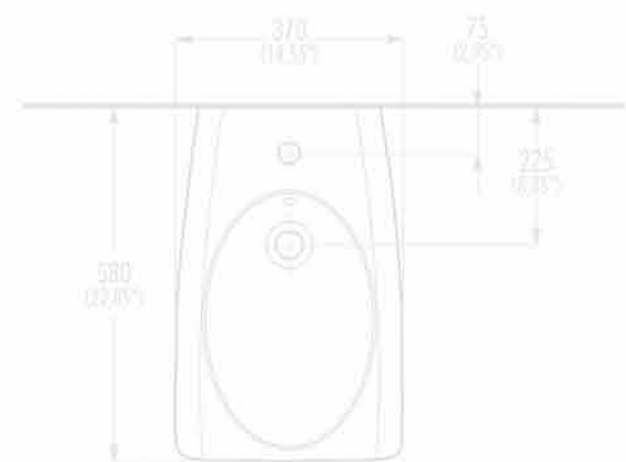
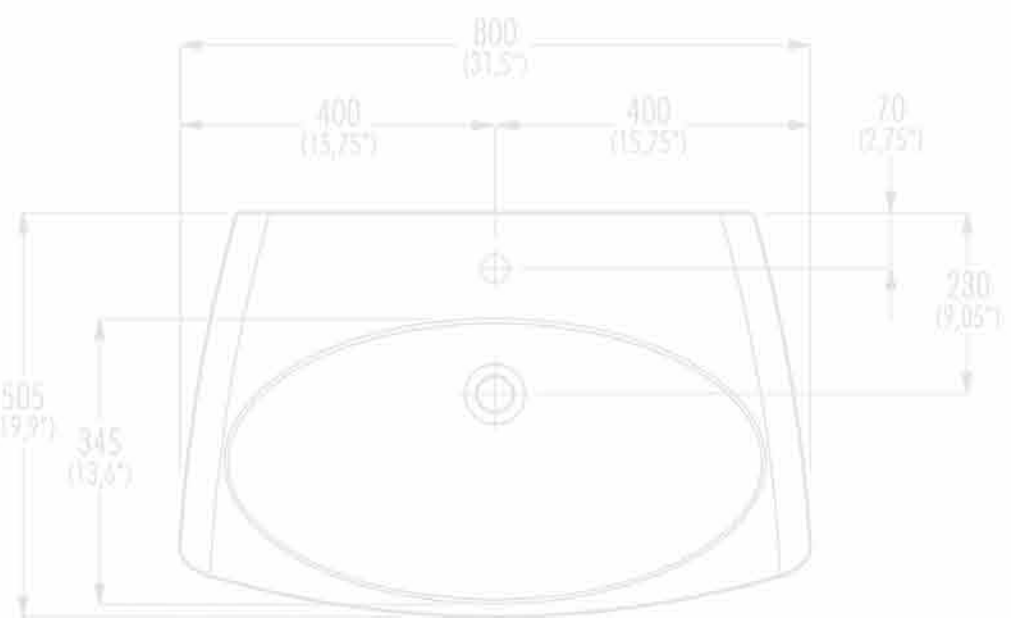
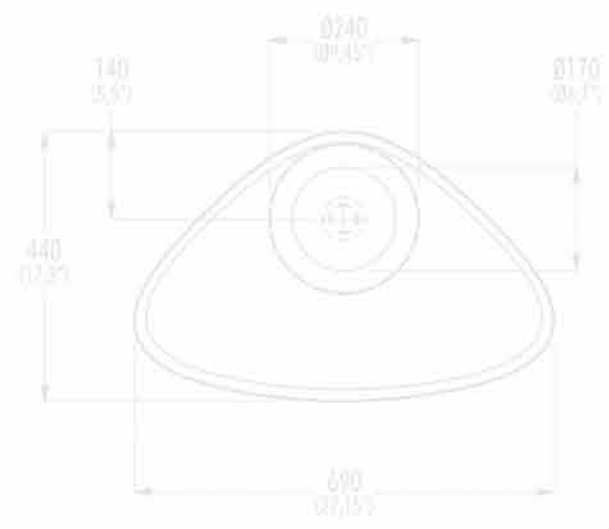
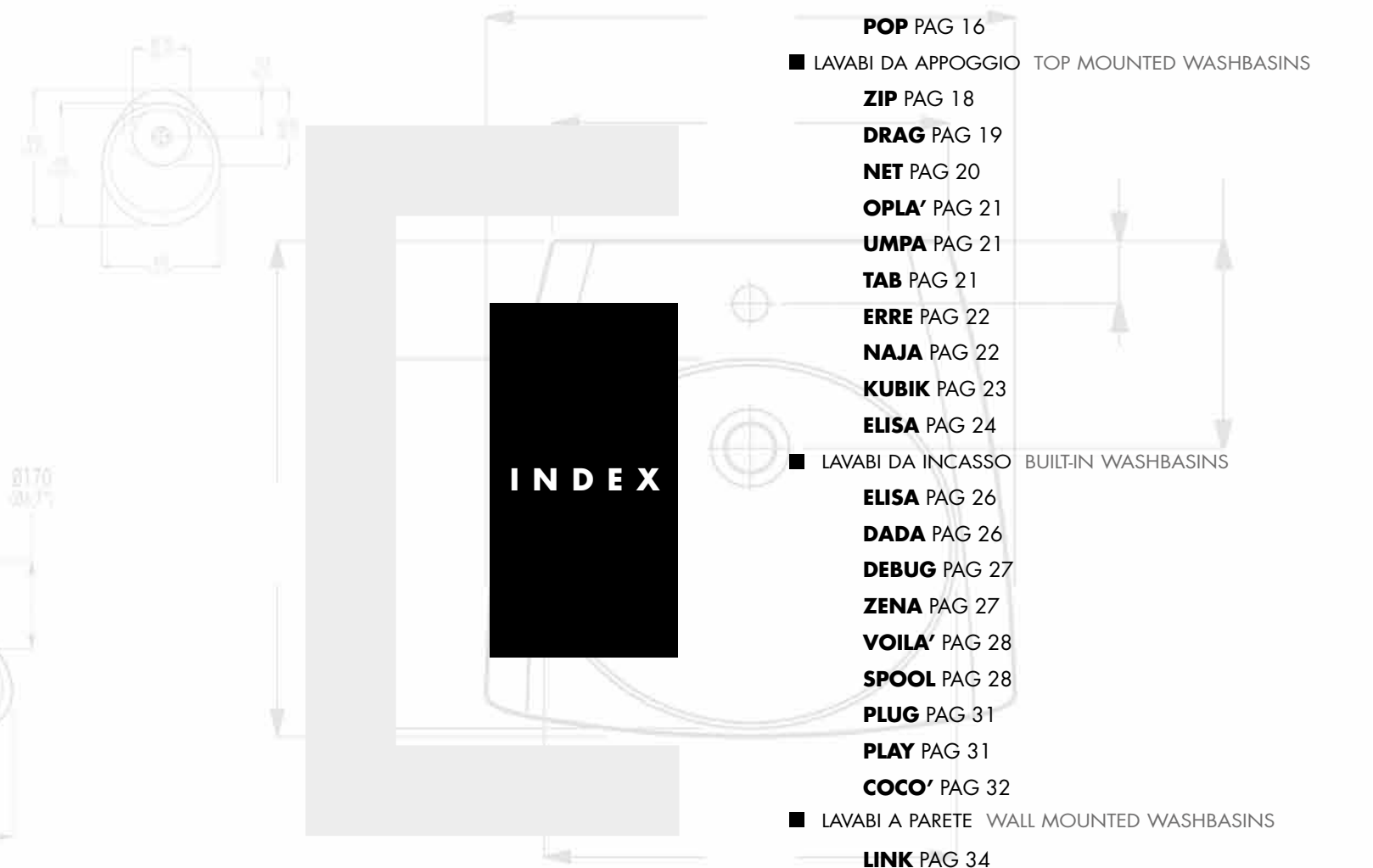
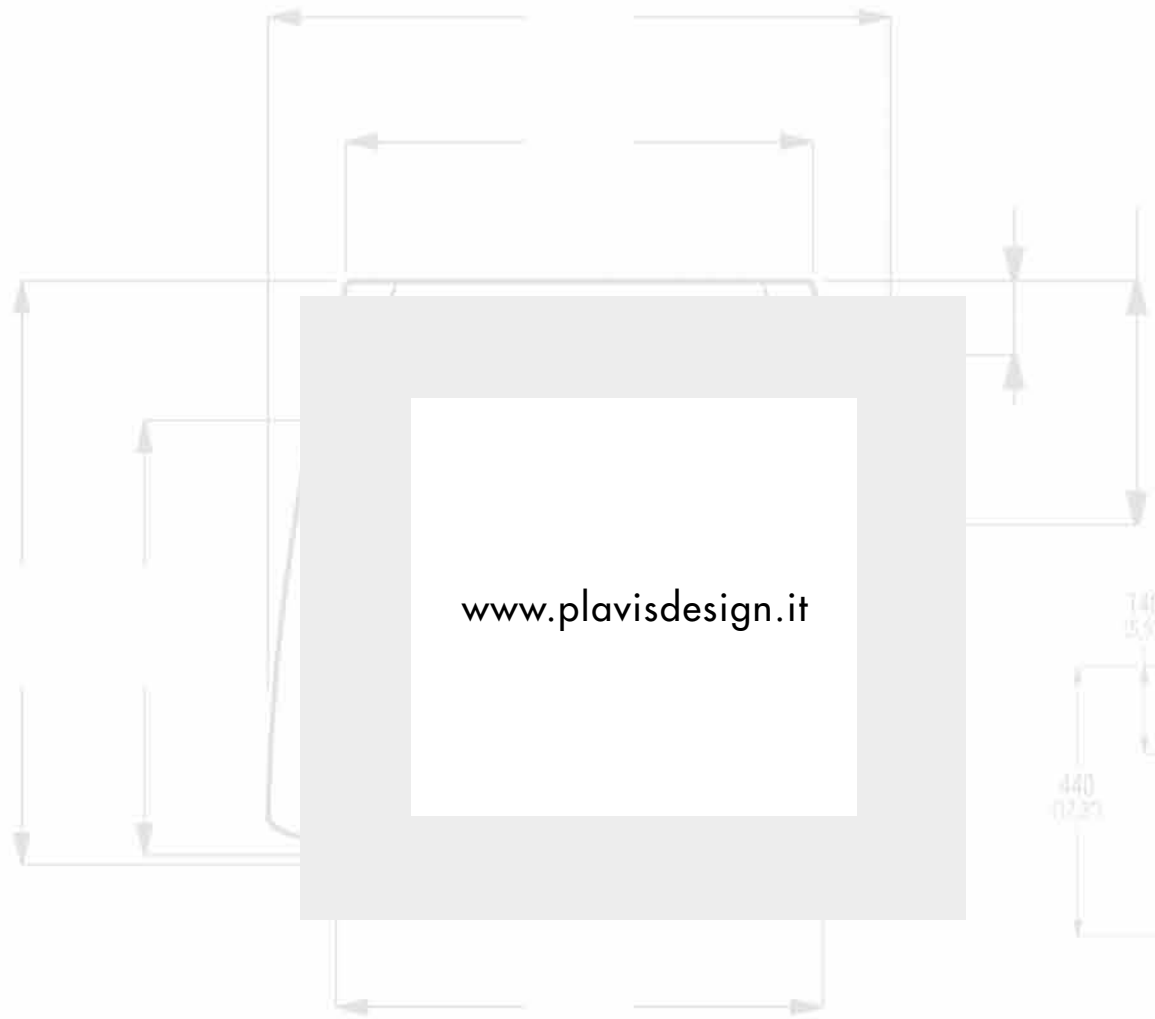


4.0

plavisdesign



- COLLEZIONE SERIES
- SHIFT** PAG 4
- KAPA** PAG 8
- PAL** PAG 14
- POP** PAG 16
- LAVABI DA APPOGGIO TOP MOUNTED WASHBASINS
- ZIP** PAG 18
- DRAG** PAG 19
- NET** PAG 20
- OPLA'** PAG 21
- UMPA** PAG 21
- TAB** PAG 21
- ERRE** PAG 22
- NAJA** PAG 22
- KUBIK** PAG 23
- ELISA** PAG 24
- LAVABI DA INCASSO BUILT-IN WASHBASINS
- ELISA** PAG 26
- DADA** PAG 26
- DEBUG** PAG 27
- ZENA** PAG 27
- VOILA'** PAG 28
- SPOOL** PAG 28
- PLUG** PAG 31
- PLAY** PAG 31
- COCO'** PAG 32
- LAVABI A PARETE WALL MOUNTED WASHBASINS
- LINK** PAG 34
- LAN** PAG 35
- TROC** PAG 36
- BRIT** PAG 37
- BLOT** PAG 37
- SNAP** PAG 38
- CORIAN®
- AVI** PAG 41
- PIATTI DOCCIA SHOWER TRAYS
- KUBIK** PAG 43



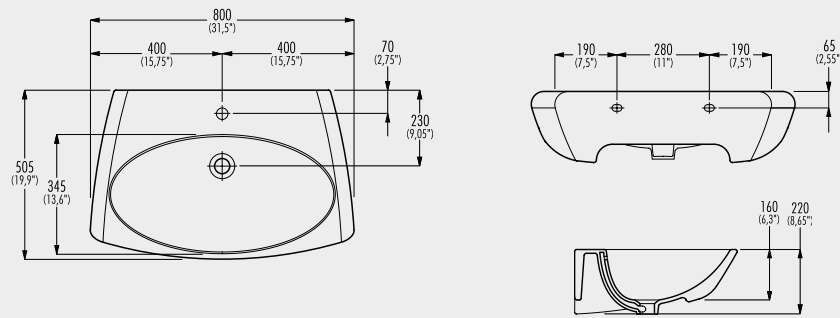
INDEX

C65301



SHIFT 80

Lavabo da parete con foro rubinetteria e troppo pieno |
Wall mounted washbasin with taphole and overflow |



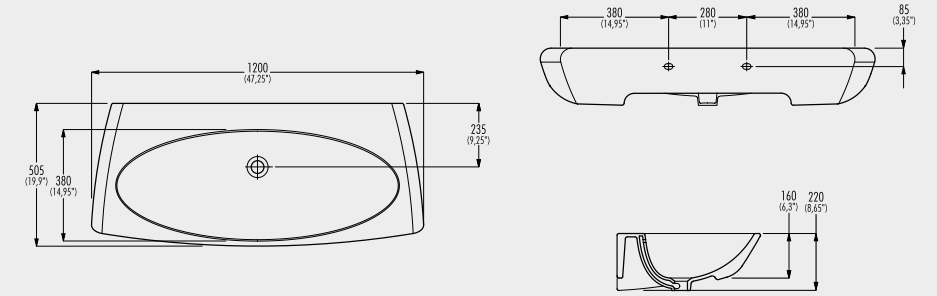
800x505xh220 € 450,00

C65304



SHIFT 120

Lavabo da parete senza foro rubinetteria, con troppopieno |
Wall mounted washbasin without taphole, with overflow |



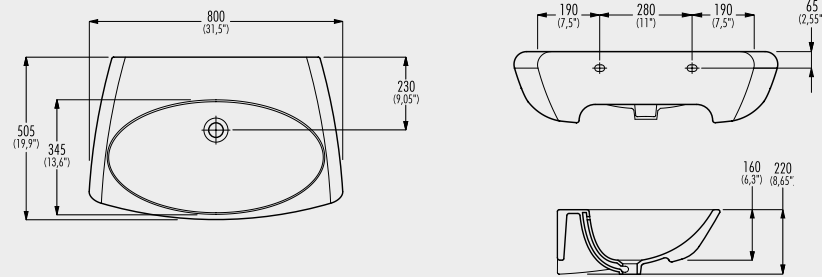
1200x505xh220 € 885,00

C65302



SHIFT 80

Lavabo da parete senza foro rubinetteria, con troppopieno |
Wall mounted washbasin without taphole, with overflow |



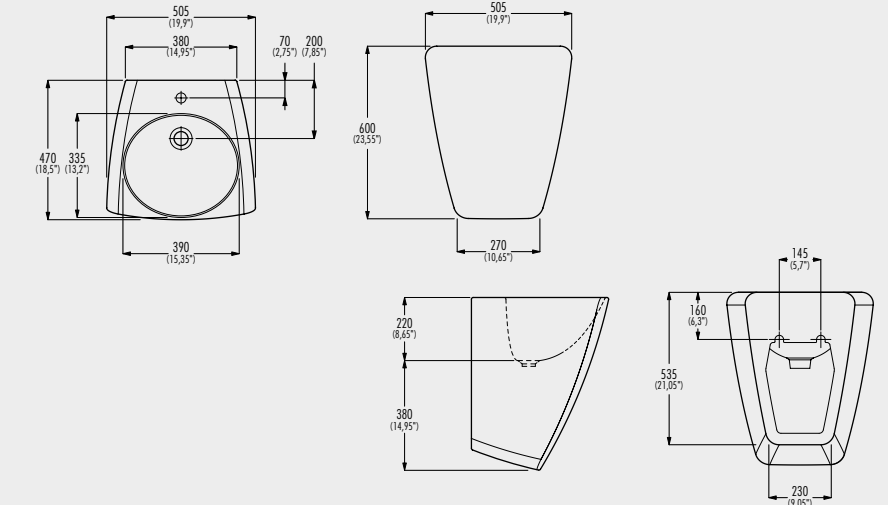
800x505xh220 € 445,00

C65313



SHIFT / HUB

Lavabo da parete con foro rubinetteria, senza troppopieno |
Wall mounted washbasin with taphole, without overflow |



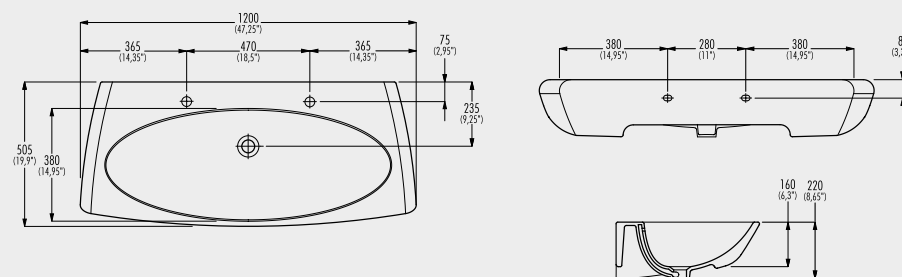
505x470xh600 € 890,00

C65303



SHIFT 120

Lavabo da parete con due fori rubinetteria e troppo pieno |
Wall mounted washbasin with two tapholes and overflow |



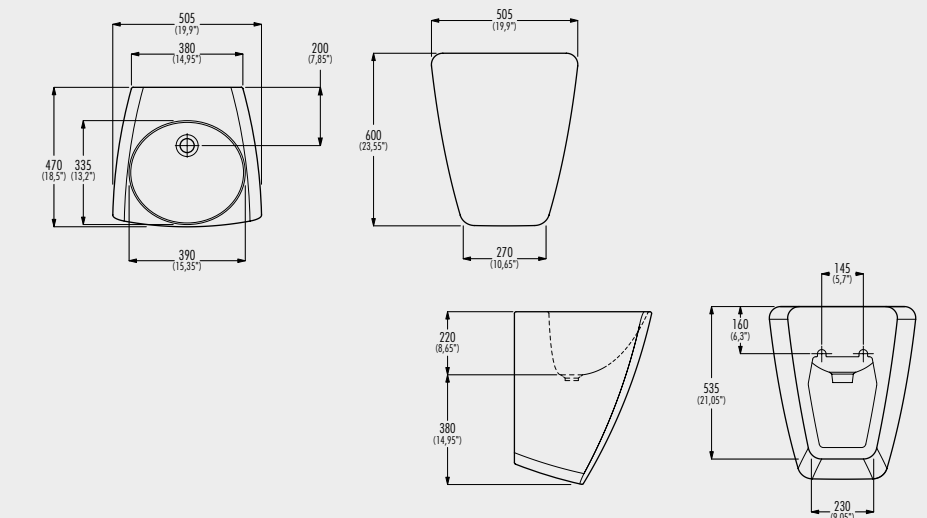
1200x505xh220 € 890,00

C65314



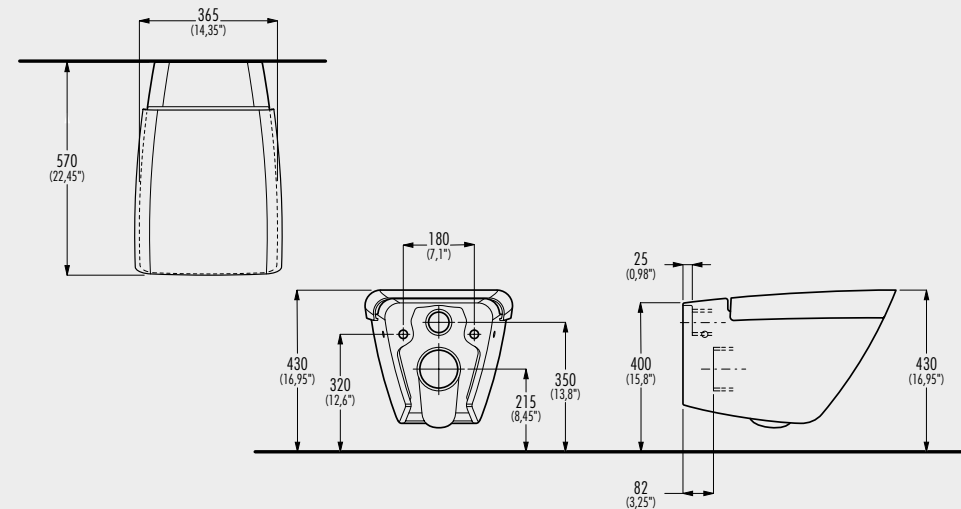
SHIFT / HUB

Lavabo da parete, senza foro rubinetteria e senza troppo pieno |
Wall mounted washbasin without taphole, without overflow |



505x470xh600 € 885,00

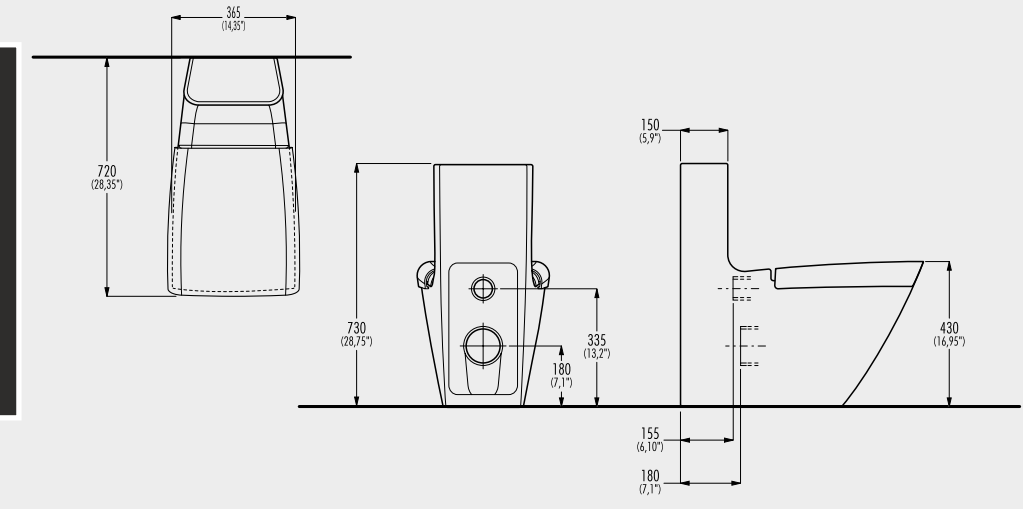
C65601



Vaso sospeso, senza sedile | Wall hung wc, without seat |

570x365xh350 | € 450,00

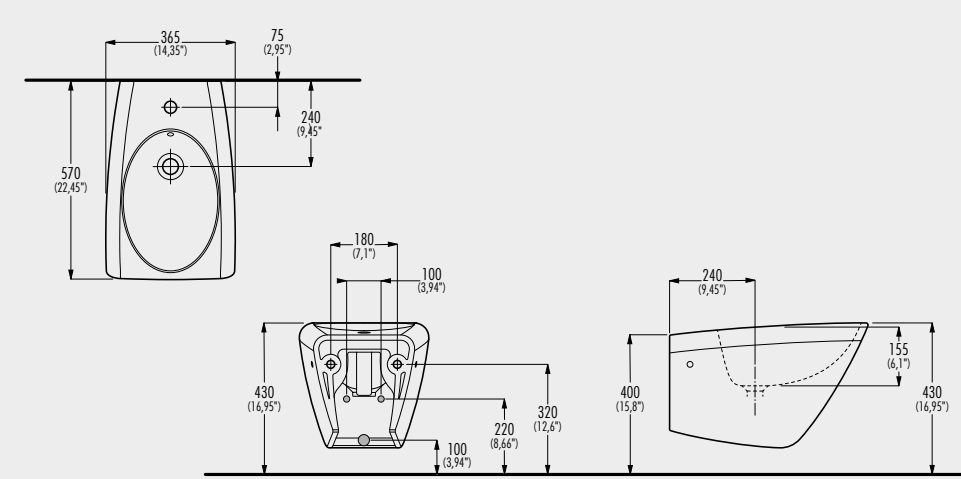
C65602S



Vaso monoblocco onepiece, senza sedile, con scarico sifonico |
Onepiece wc without seat |

720x365xh730 | € 1.250,00

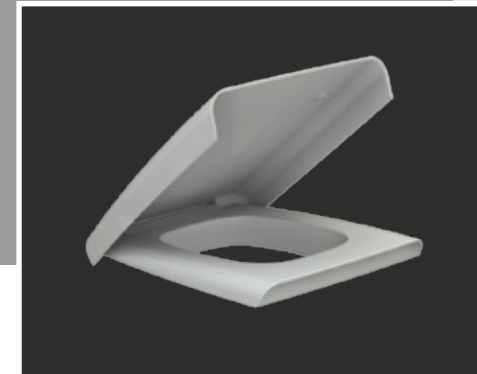
C65401



Bidet sospeso | Wall hung bidet |

570x365xh350 | € 450,00

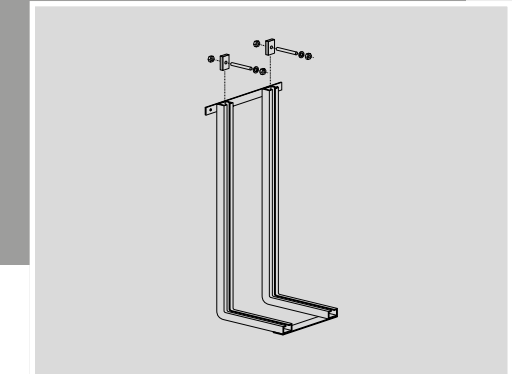
C65701



Sedile in termoindurente con
chiusura rallentata |
Seat and cover in thermosetting
material with soft close |

€ 159,00

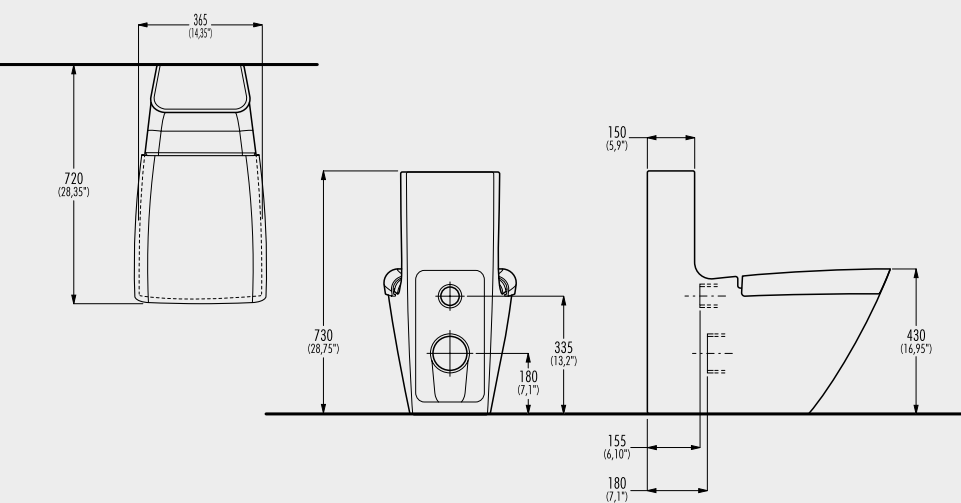
C65702



Staffa di fissaggio per vaso e
bidet sospeso |
Fixing bracket for wall hung
wc/bidet |

€ 33,00

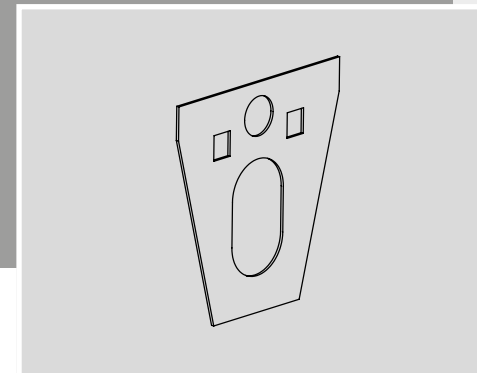
C65602



Vaso monoblocco onepiece, senza sedile, con scarico a parete trasformabile
a pavimento tramite curva tecnica | Onepiece wc without seat, horizontal
outlet adjustable to vertical outlet using PVC pipe |

720x365xh730 | € 1.250,00

C65703



Protezione antiurto
per wc e bidet sospesi |
Protection set for wall mounted
wc and bidet |

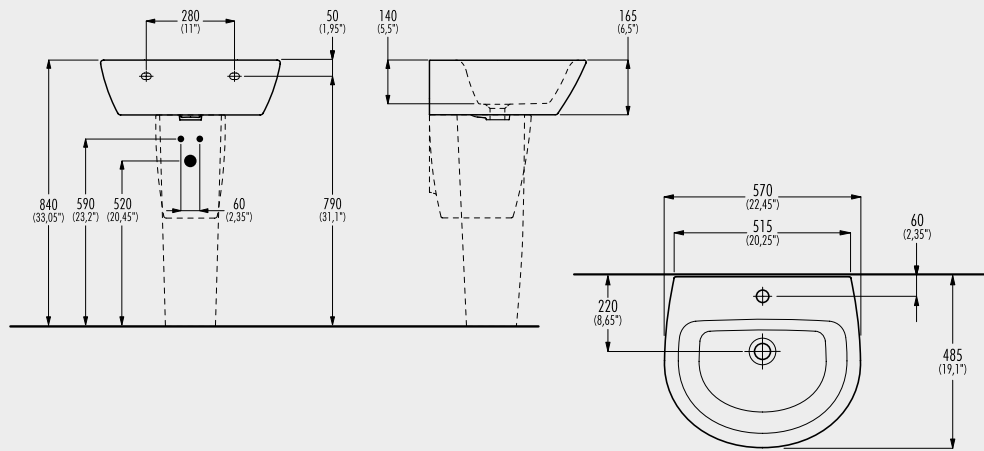
€ 15,75

C55308



KAPA 57

Lavabo da parete con foro rubinetteria, semicolonna e troppopieno |
Wall mounted washbasin with taphole, semi-column and overflow |



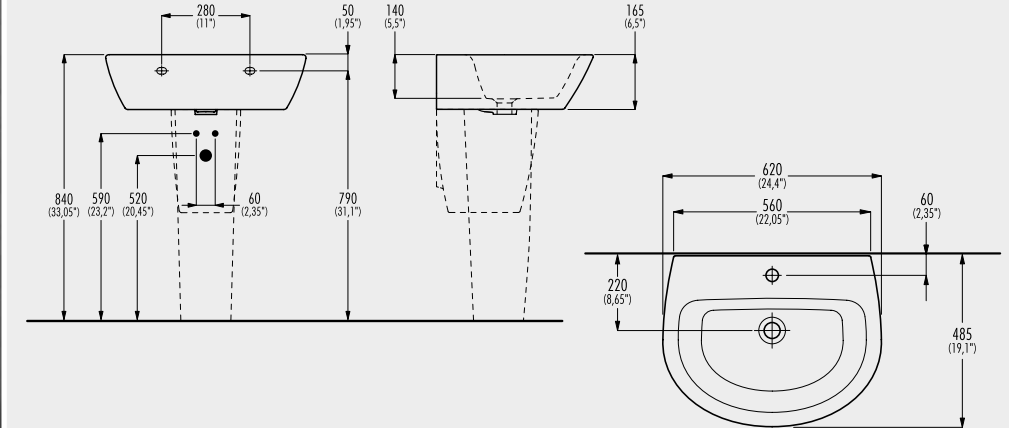
570x485x470 € 175,00

C55307



KAPA 62

Lavabo da parete con foro rubinetteria, colonna e troppopieno |
Wall mounted washbasin with taphole, column and overflow |



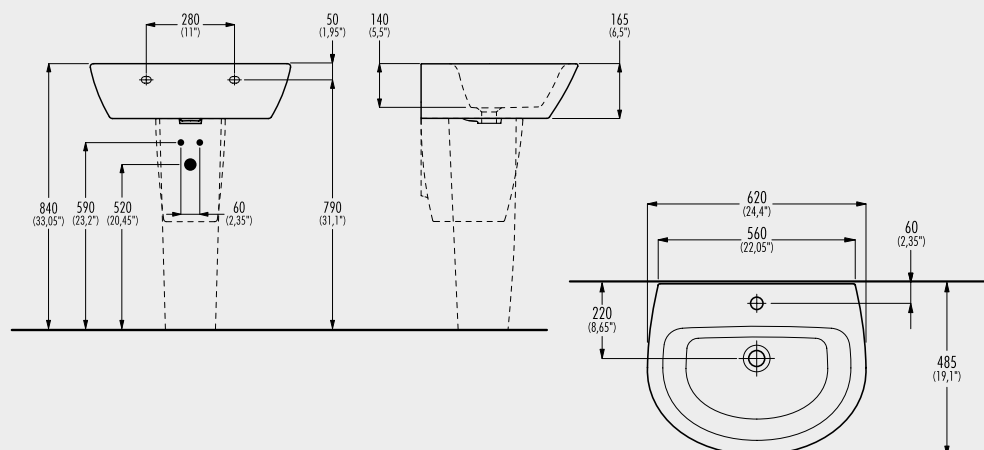
620x485x835 € 185,00

C55309



KAPA 62

Lavabo da parete con foro rubinetteria, semicolonna e troppopieno |
Wall mounted washbasin with taphole, semi-column and overflow |



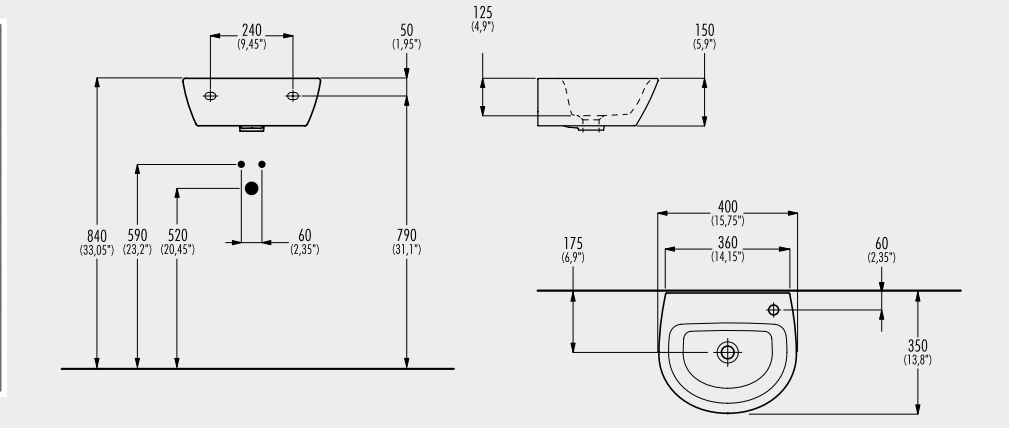
620x485x475 € 185,00

C55311



KAPA 40

Lavabo da parete e da appoggio con foro rubinetteria e troppopieno |
Wall/top mounted washbasin with taphole and overflow |



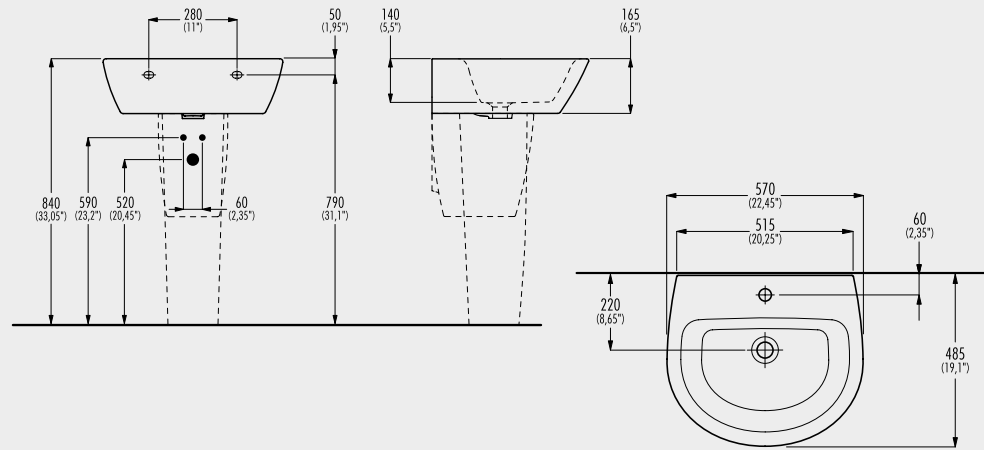
400x350x150 € 85,00

C55306



KAPA 57

Lavabo da parete con foro rubinetteria, colonna e troppopieno |
Wall mounted washbasin with taphole, column and overflow |



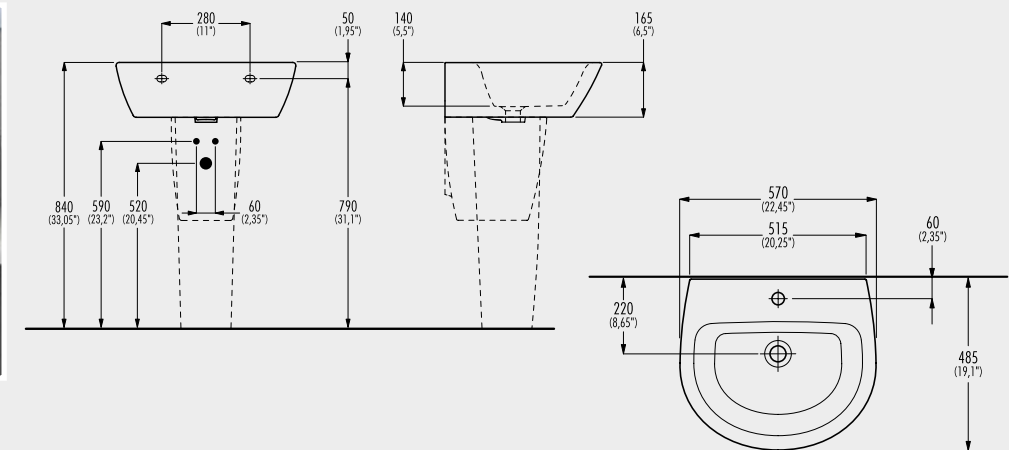
570x485x835 € 175,00

C55304



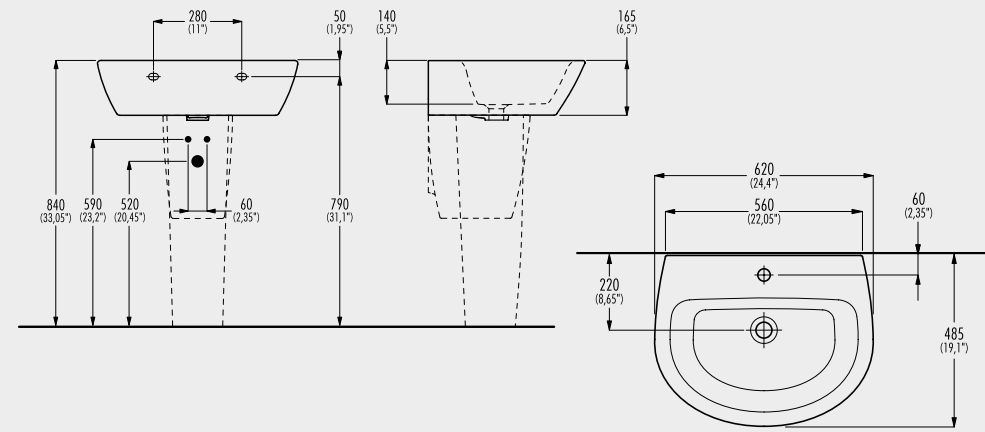
KAPA 57

Lavabo da parete e da appoggio con foro rubinetteria e troppopieno |
Wall/top mounted washbasin with taphole and overflow |



570x485x180 € 105,00

C55305

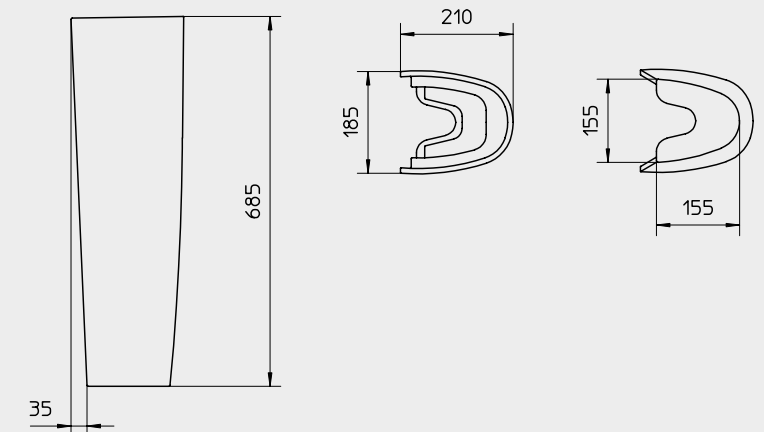
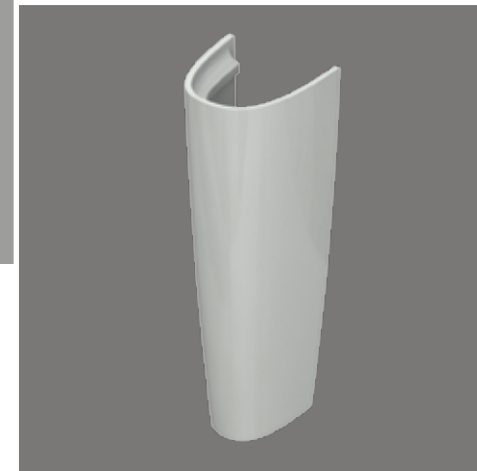


KAPA 62

Lavabo da parete e da appoggio con foro rubinetteria e troppopieno |
Wall/top mounted washbasin with taphole and overflow |

620x485x180 | € 115,00

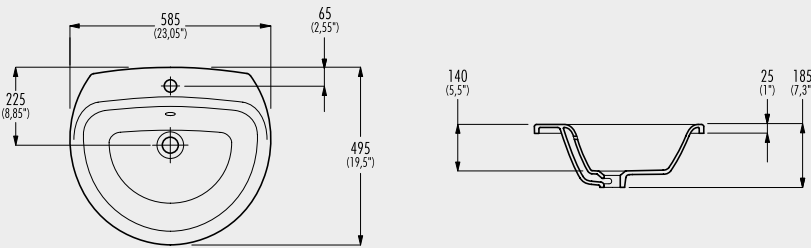
C55301



Colonna | Column |

185x210xh685 | € 70,00

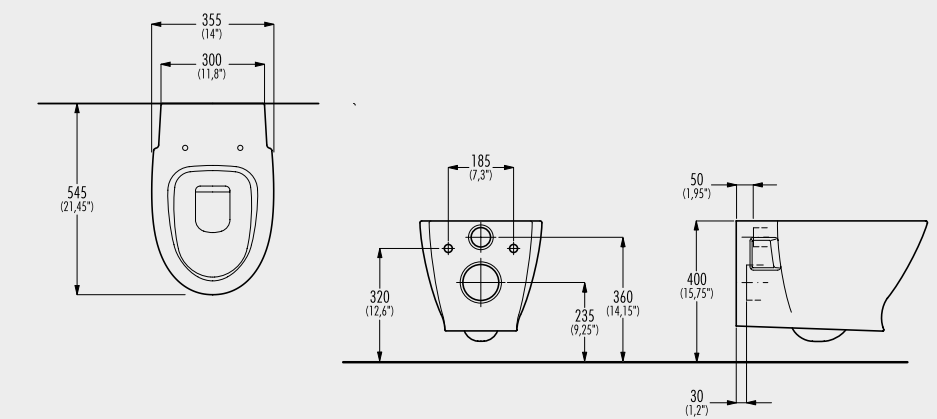
C55303



Lavabo da incasso con foro rubinetteria e troppopieno |
Built-in washbasin with taphole and overflow |

585x495x185 | € 105,00

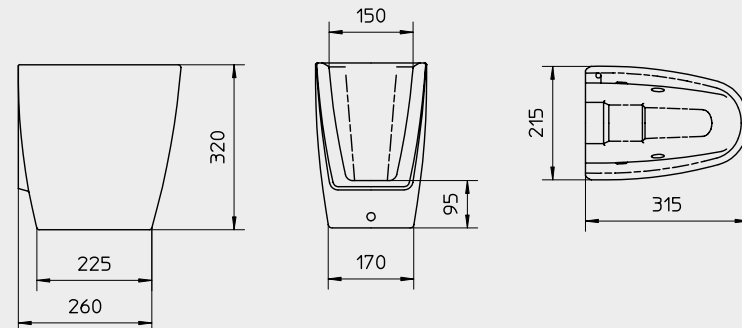
C55603



Vaso sospeso, senza sedile | Wall hung wc, without seat |

540x355xh315 | € 190,00

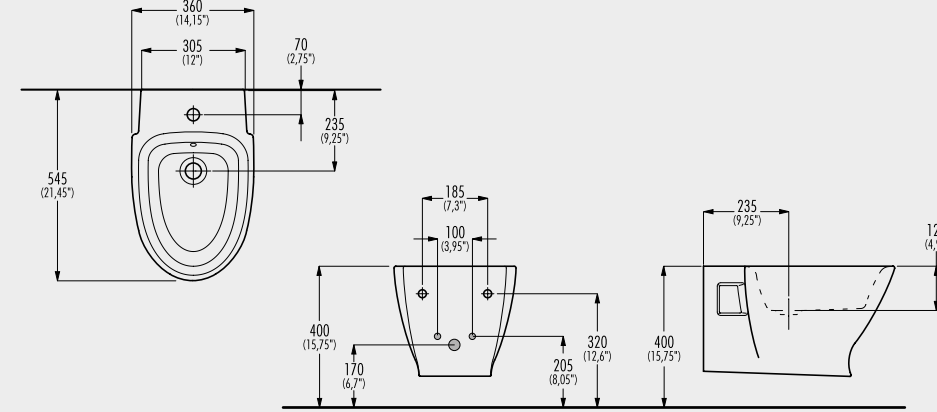
C55302



Semicolonna | Column |

215x315xh320 | € 70,00

C55403

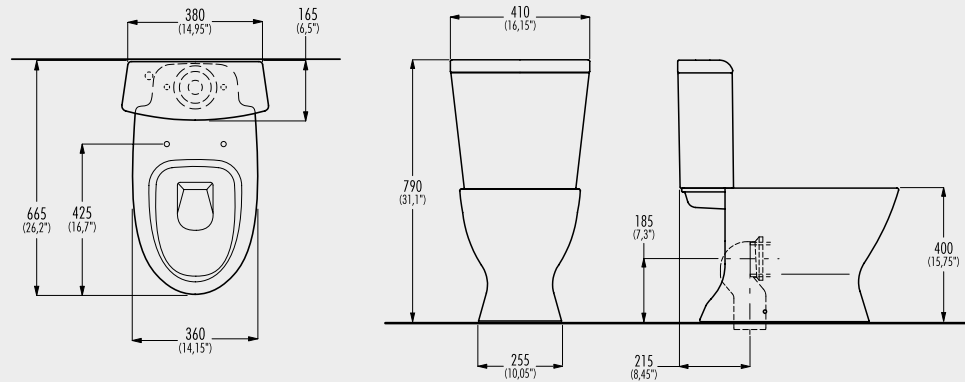


Bidet sospeso | Wall hung bidet |

540x355xh315 | € 190,00

C55600

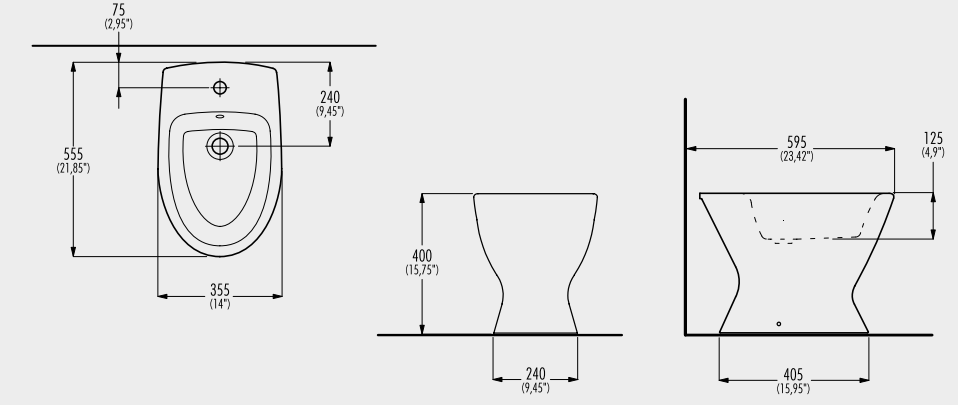
[cassetta/tank C55604 € 000,00 + wc C55601 € 000,00]



Vaso monoblocco, scarico a parete trasformabile a pavimento tramite curva tecnica, sedile escluso, fissaggi inclusi | Close coupled wc, horizontal outlet adjustable to vertical outlet using PVC pipe, without seat and cover, fixing kit included |

665x410xh790 | € 330,00

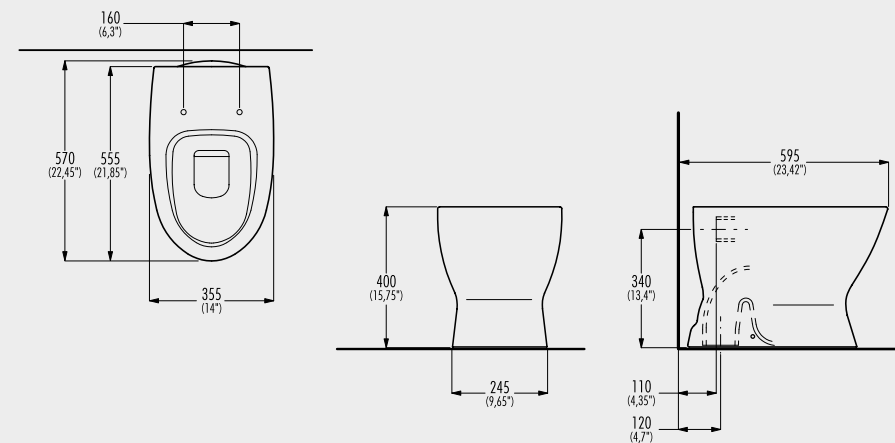
C55401



Bidet a terra | Floor standing bidet |

555x355xh395 | € 155,00

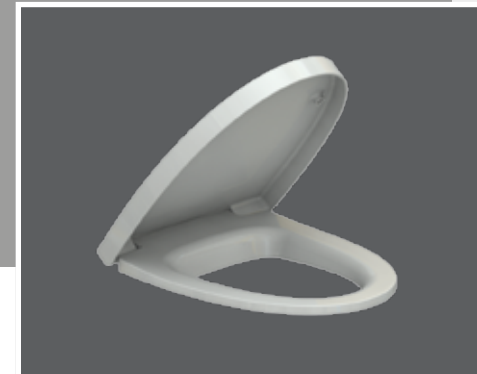
C55602



Vaso a terra, scarico a pavimento, senza sedile | Floor standing wc, vertical outlet, without seat |

550x360xh400 | € 155,00

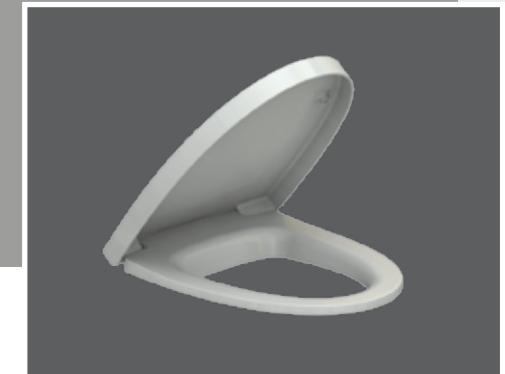
C55701



Sedile in termoindurente con chiusura rallentata | Seat and cover in termosetting material with soft close |

€ 121,00

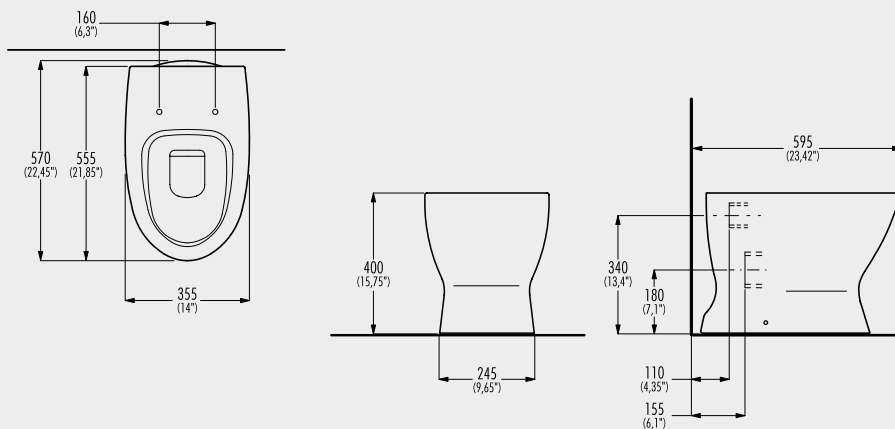
C55704



Sedile in termoindurente senza chiusura rallentata | Seat and cover in termosetting material without soft close |

€ 99,00

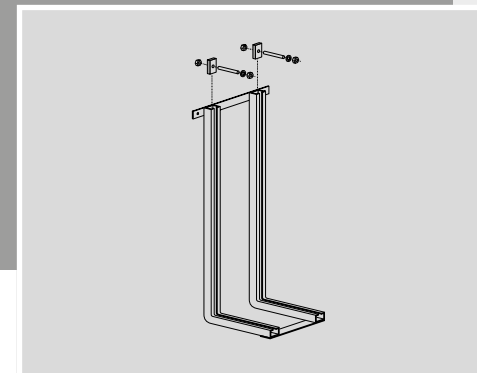
C55605



Vaso a terra, scarico a parete, senza sedile | Floor standing wc, horizontal outlet, without seat |

550x360xh400 | € 155,00

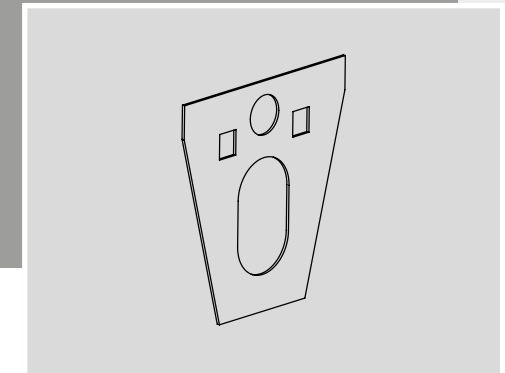
C65702



Staffa di fissaggio per vaso e bidet sospeso | Fixing bracket for wall hung wc/bidet |

€ 33,00

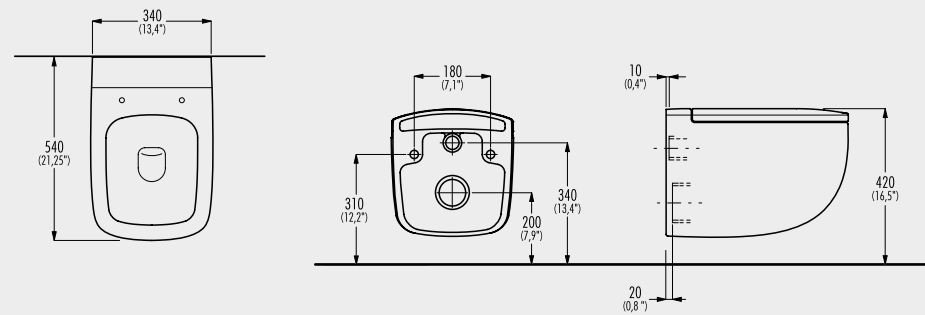
C65703



Protezione antiurto per wc e bidet sospesi | Protection set for wall mounted wc and bidet |

€ 15,75

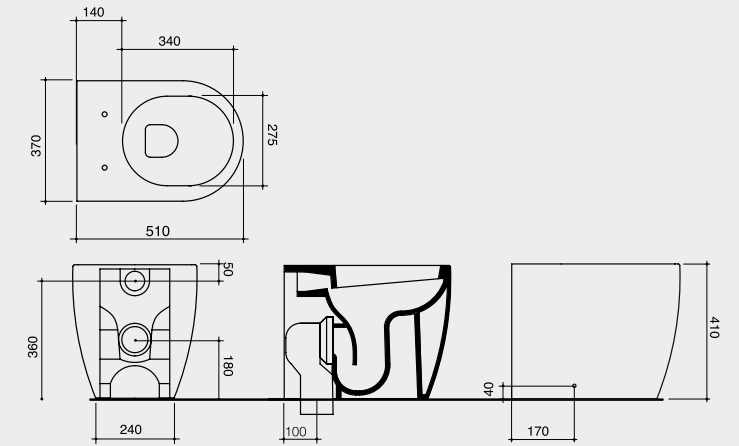
C56602



Vaso sospeso, senza sedile | Wall hung wc, without seat |

540x340xh350 | € 335,00

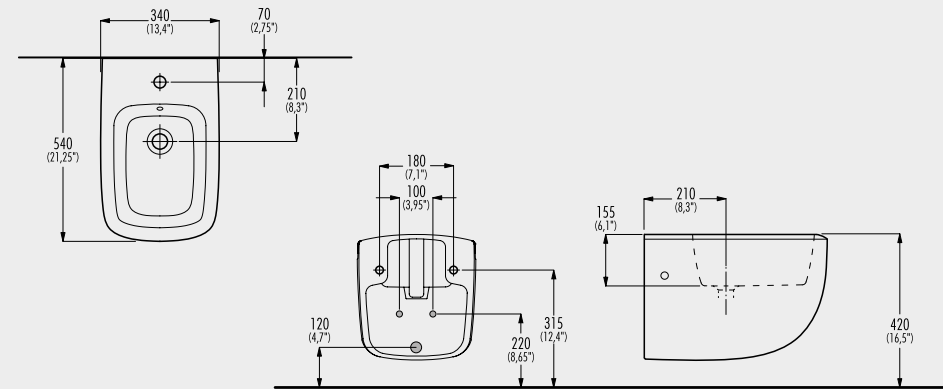
C68601



Vaso a terra, senza sedile | Floor standing wc, without seat |

510x370xh410 | € 345,00

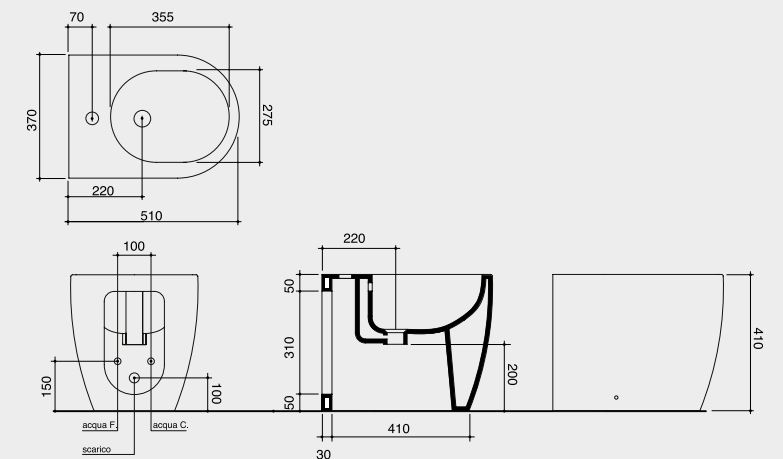
C56401



Bidet sospeso | Wall hung bidet |

540x340xh350 | € 335,00

C68401



Bidet a terra | Floor standing bidet |

510x370xh410 | € 345,00

C56702



Sedile in termoindurente con chiusura rallentata | Seat and cover in thermosetting material with soft close |

€ 121,00

C56703



Sedile in termoindurente senza chiusura rallentata | Seat and cover in thermosetting material without soft close |

€ 99,00

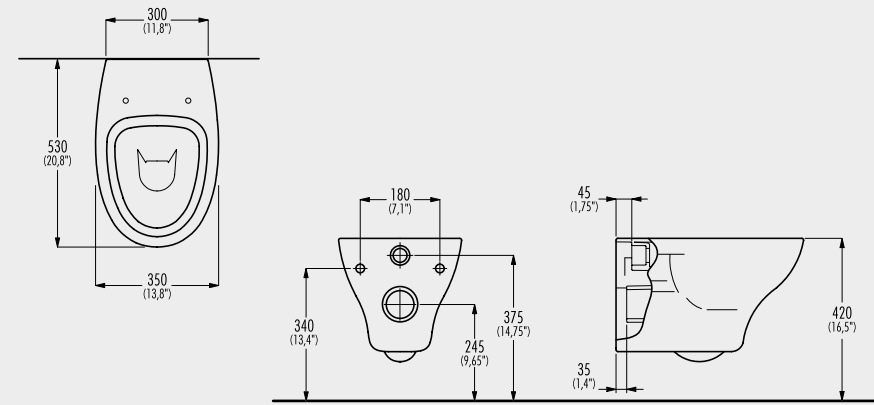
C68701



Sedile in termoindurente con chiusura rallentata | Seat and cover in thermosetting material with soft close |

€ 159,00

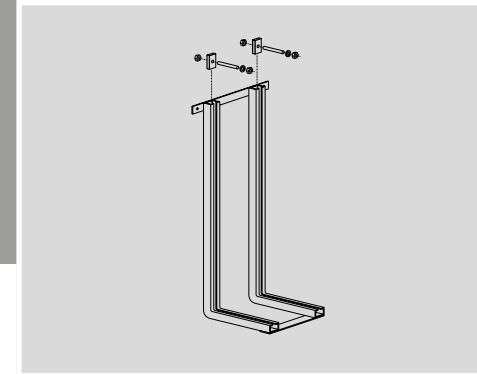
C61601



Vaso sospeso, senza sedile | Wall hung wc, without seat |

530x350xh350 | € 150,00

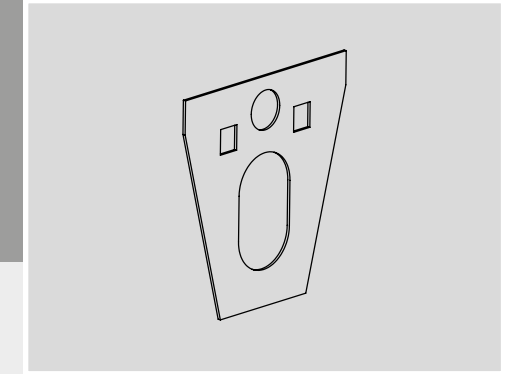
C65702



Staffa di fissaggio per vaso e bidet sospeso | Fixing bracket for wall hung wc/bidet |

€ 33,00

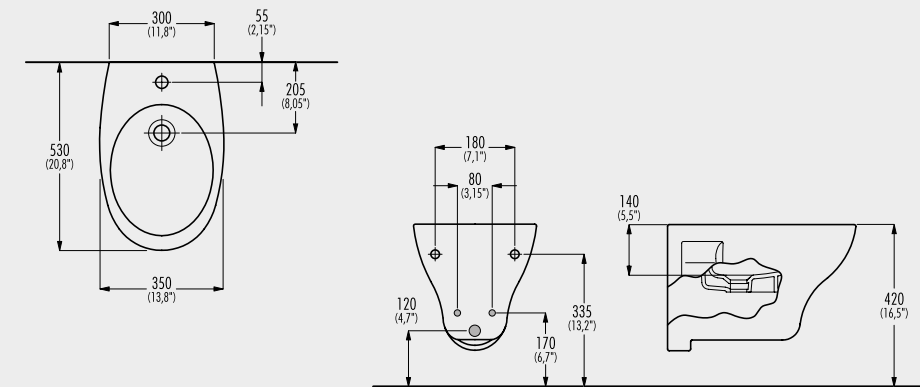
C65703



Protezione antiurto per wc e bidet sospesi | Protection set for wall mounted wc and bidet |

€ 15,75

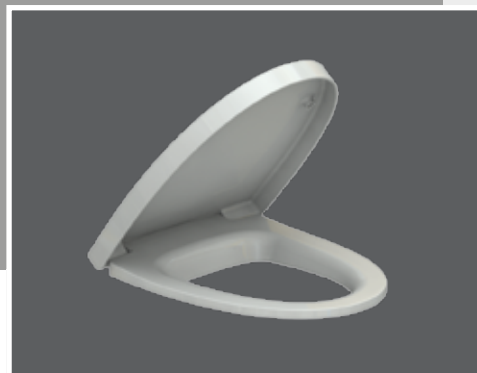
C61401



Bidet sospeso | Wall hung bidet |

530x350xh350 | € 150,00

C55701



Sedile in termoindurente con chiusura rallentata | Seat and cover in termosetting material with soft close |

€ 121,00

C61702

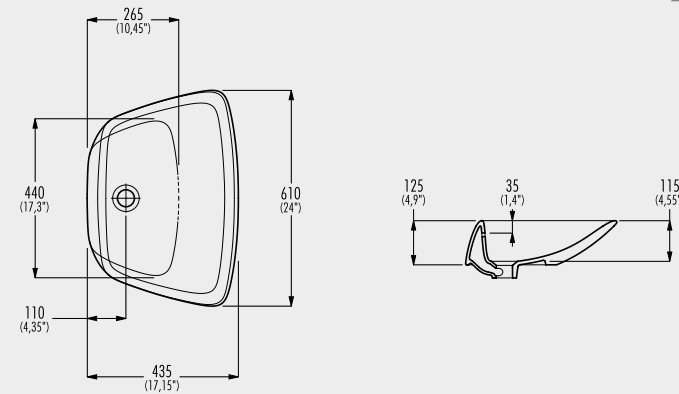


Sedile in termoindurente senza chiusura rallentata | Seat and cover in termosetting material without soft close |

€ 85,00

C50305

ZIP



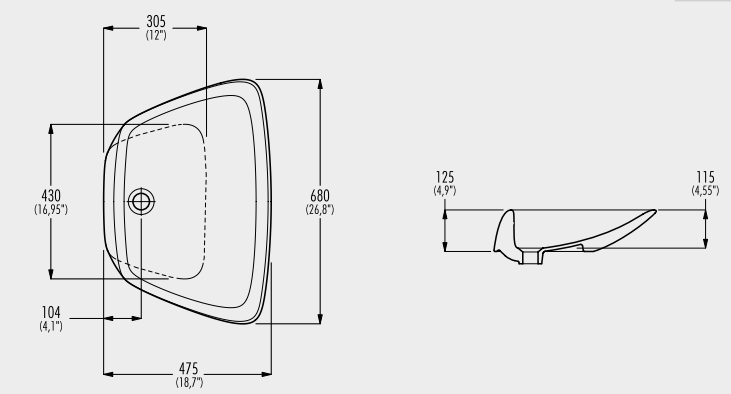
ZIP 61

Lavabo da appoggio, con troppopieno |
Top mounted washbasin, with overflow |

610x435xh170 | € 345,00

C50308

ZIP



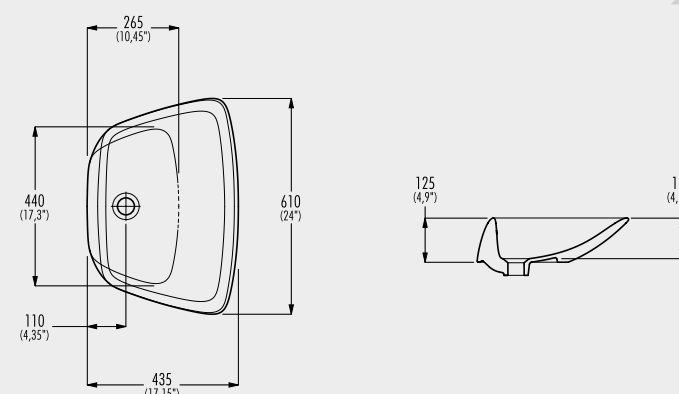
ZIP 68

Lavabo da appoggio, senza troppopieno |
Top mounted washbasin, without overflow |

680x470xh170 | € 350,00

C50306

ZIP



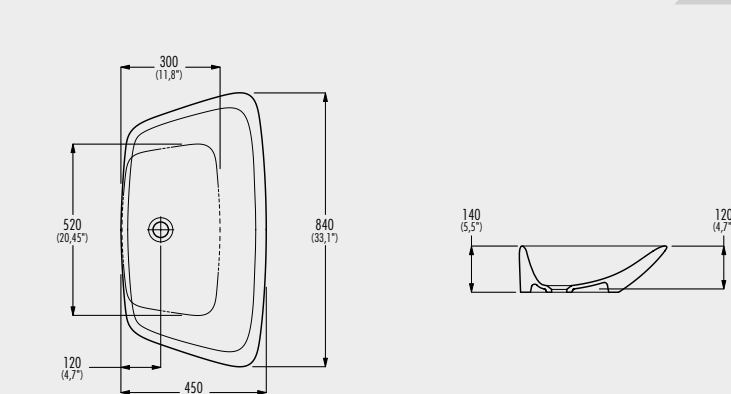
ZIP 61

Lavabo da appoggio, senza troppopieno |
Top mounted washbasin, without overflow |

610x435xh170 | € 340,00

C50309

ZIP



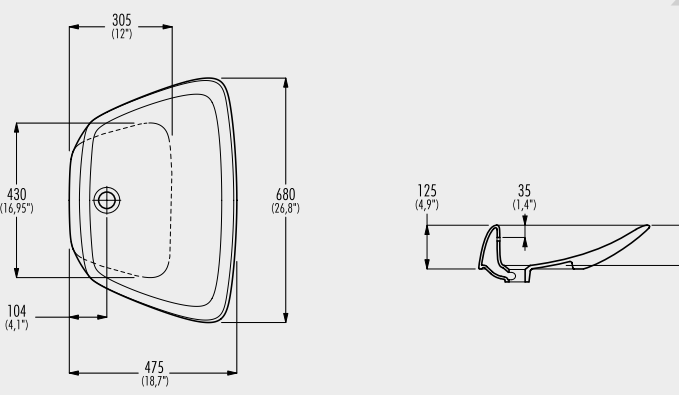
ZIP 84

Lavabo da appoggio, senza troppopieno |
Top mounted washbasin, without overflow |

840x450xh140 | € 395,00

C50307

ZIP



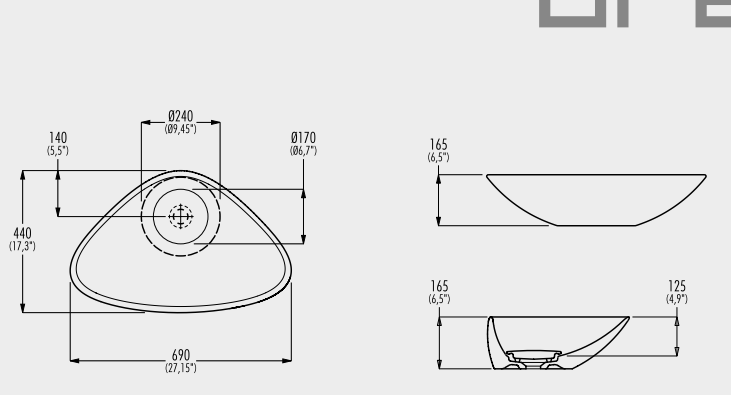
ZIP 68

Lavabo da appoggio, con troppopieno |
Top mounted washbasin, with overflow |

680x470xh170 | € 355,00

C50303

drag



Lavabo da appoggio con copripiletta ceramica, senza troppopieno |
Top mounted washbasin with waste ceramic cover, without overflow |

690x440xh165 | € 390,00

C50326

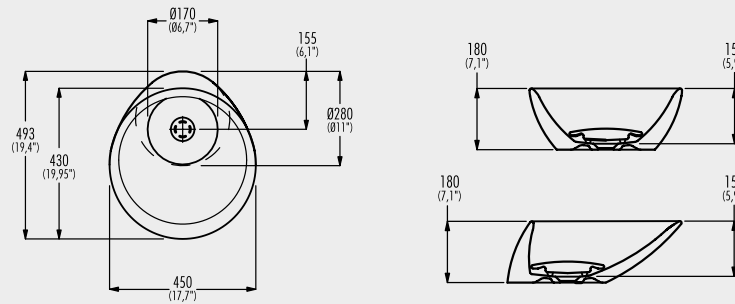


drag

Copripiletta ceramico | Waste ceramic cover |

€ 90,00

C50304



net

Lavabo da appoggio con copripiletta ceramico, senza troppopieno |
Top mounted washbasin with waste ceramic cover, without overflow |

450x493xh180 | € 335,00

C50326



net

Copripiletta ceramico | Waste ceramic cover |

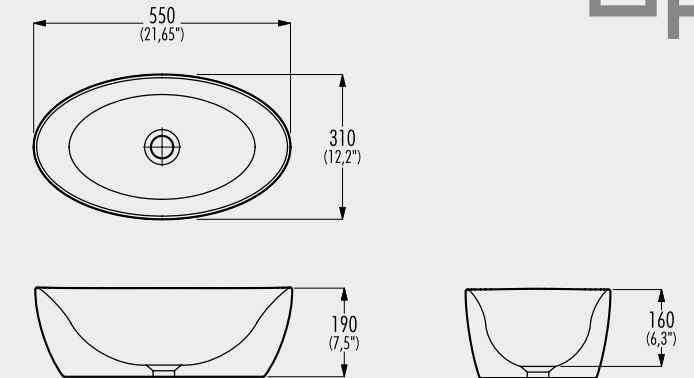
€ 90,00

C50330



opla'

Lavabo da appoggio senza troppopieno |
Top-mounted washbasin without overflow |



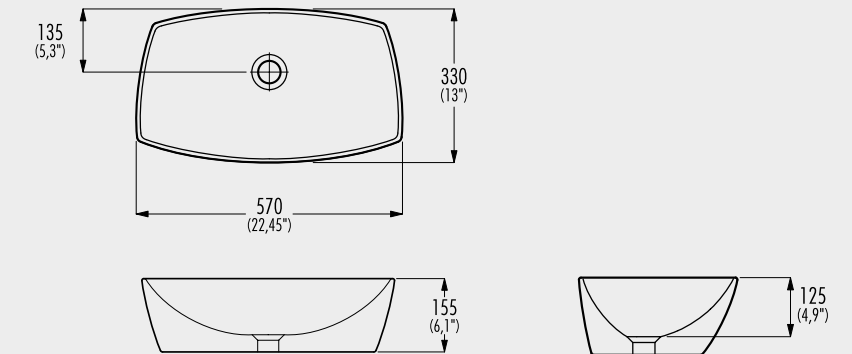
550x310xh190 | € 360,00

C50329



umpa

Lavabo da appoggio senza troppopieno |
Top-mounted washbasin without overflow |



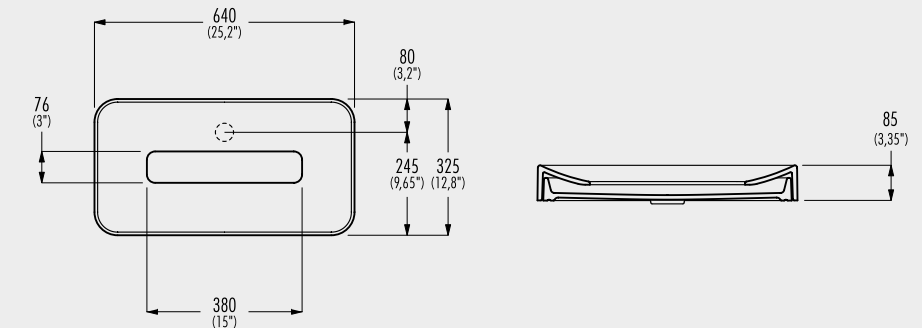
570x330xh155 | € 395,00

C50313



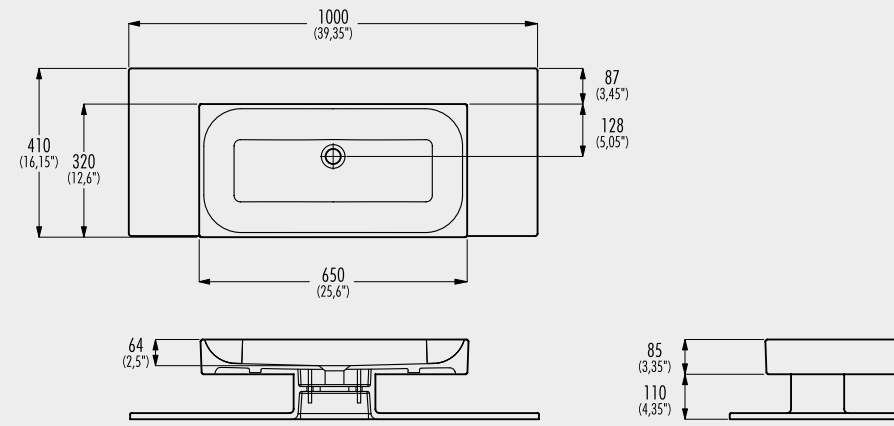
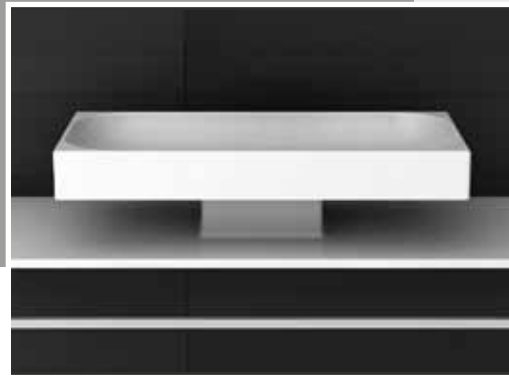
tab

Lavabo da appoggio con scarico occultato, senza troppopieno |
Top mounted washbasin with hidden outlet valve, without overflow |



640x325xh85 | € 665,00

C50310

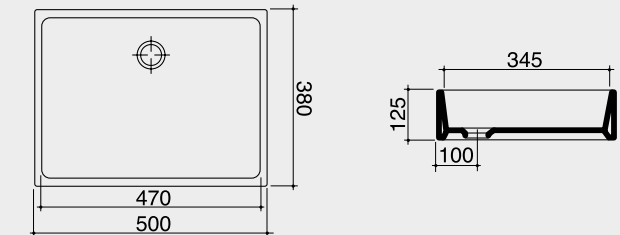


ERRE

Lavabo da appoggio con piedistallo, senza troppopieno |
Top mounted washbasin with base, without overflow |

1000x410xh195 | € 750,00

C64301



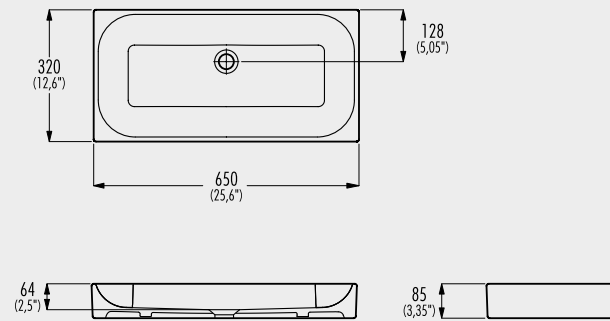
kubik

KUBIK 50

Lavabo da appoggio senza troppopieno |
Top-mounted washbasin without overflow |

500x380xh125 | € 290,00

C50311

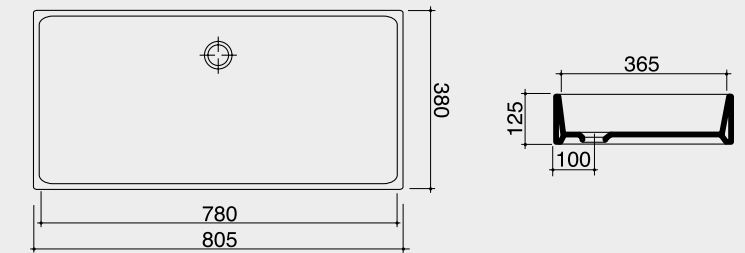


ERRE

Lavabo da appoggio, senza troppopieno |
Top mounted washbasin, without overflow |

650x320xh85 | € 360,00

C64302



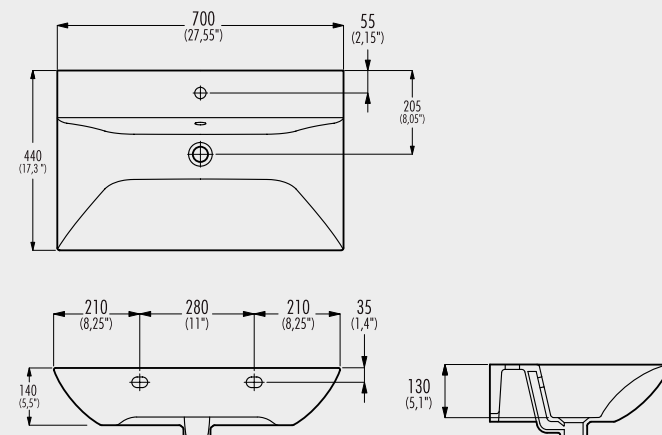
kubik

KUBIK 80

Lavabo da appoggio senza troppopieno |
Top-mounted washbasin without overflow |

805x380xh125 | € 435,00

C50337

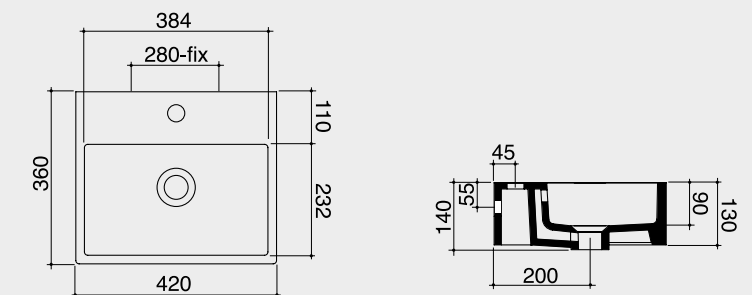


naja

Lavabo da appoggio, con troppopieno |
Top-mounted washbasin, with overflow |

700x440xh140 | € 395,00

C64303



kubik

KUBIK 42

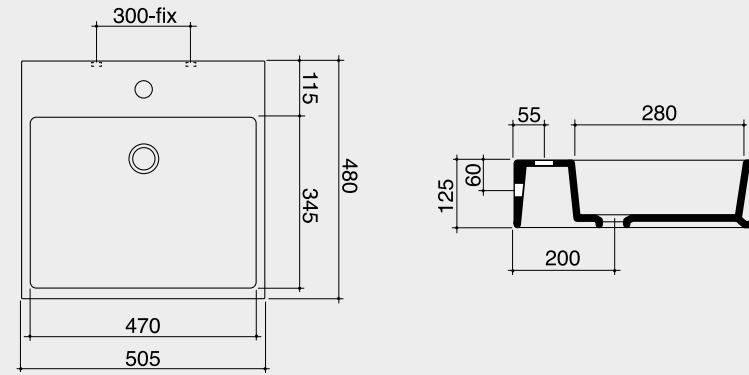
Lavabo da appoggio con foro rubinetteria e troppopieno |
Top-mounted washbasin with tap hole and overflow |

420x360xh130 | € 270,00

C64304



kubik



KUBIK 50

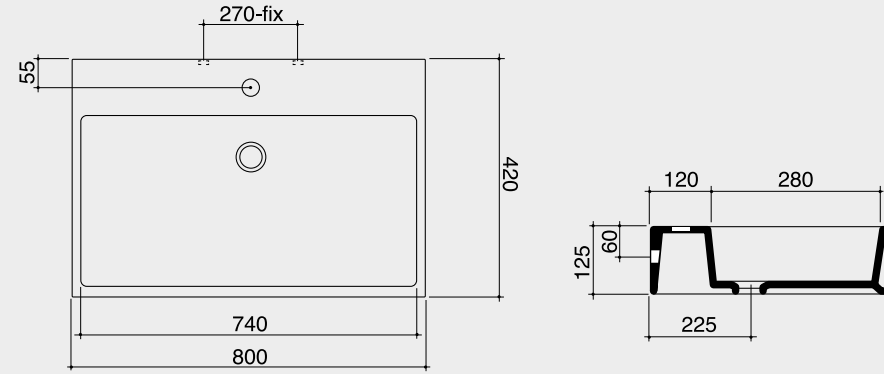
Lavabo da appoggio con foro rubinetteria senza troppopieno |
Top-mounted washbasin with taphole, without overflow |

505x480xh125 | € 295,00

C64305



kubik



KUBIK 80

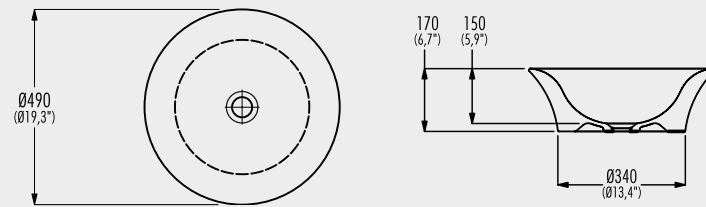
Lavabo da appoggio con foro rubinetteria e troppopieno |
Top-mounted washbasin with taphole and overflow |

800x420xh125 | € 445,00

C50318



elisa



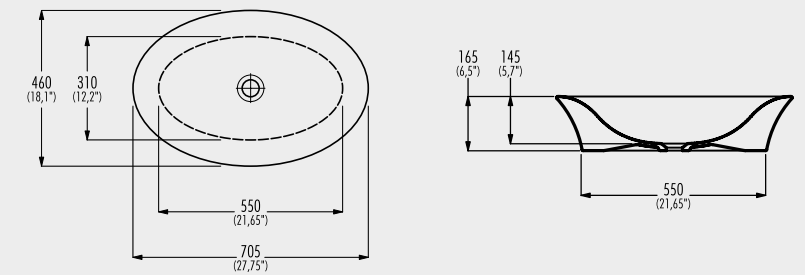
Lavabo da appoggio, senza troppopieno |
Top-mounted washbasin, without overflow |

Ø490xh170 | € 390,00

C50320



elisa



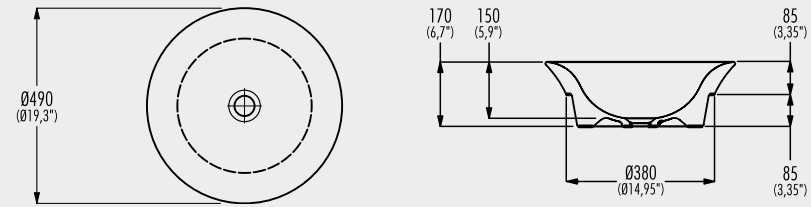
Lavabo da appoggio senza troppopieno |
Top-mounted washbasin without overflow |

705x460xh162 | € 350,00

C53305



elisa



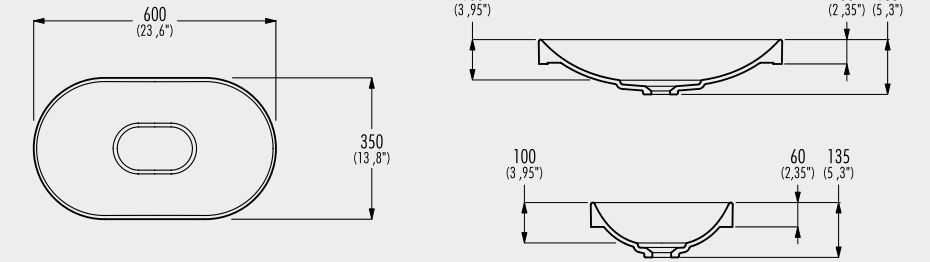
Lavabo da incasso, senza troppieno |
Built-in washbasin, without overflow |

Ø490xh170 | € 390,00

C53306



debug



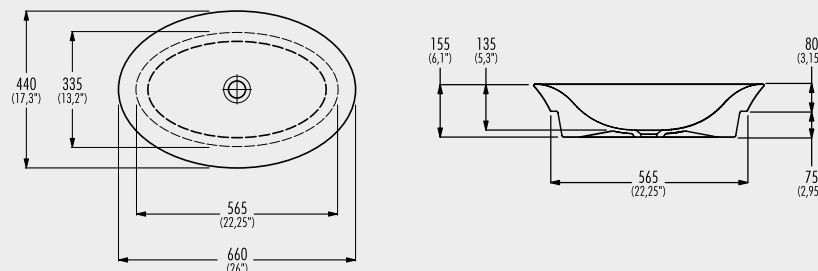
Lavabo da incasso con copripiletta ceramico, senza troppieno |
Built-in washbasin with waste ceramic cover, without overflow |

600x350xh135 | € 365,00

C53307



elisa



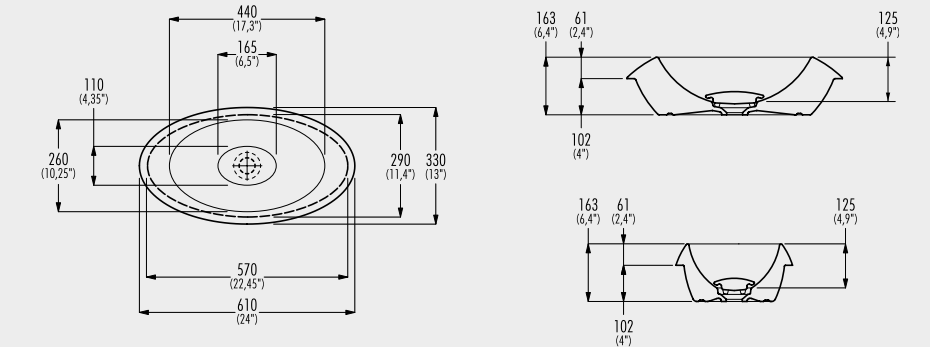
Lavabo da incasso senza troppieno |
Built-in washbasin without overflow |

660x440xh150 | € 350,00

C53302



ZENA



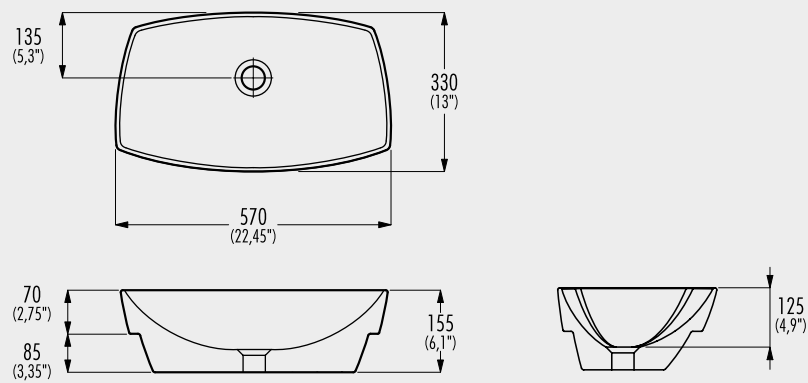
Lavabo da incasso con copripiletta ceramico, senza troppieno |
Built-in washbasin with waste ceramic cover, without overflow |

610x330xh163 | € 355,00

C53326



dada



Lavabo da incasso senza troppieno |
Built-in washbasin without overflow |

570x330xh155 | € 380,00

C50327



debug

€ 90,00

C50325

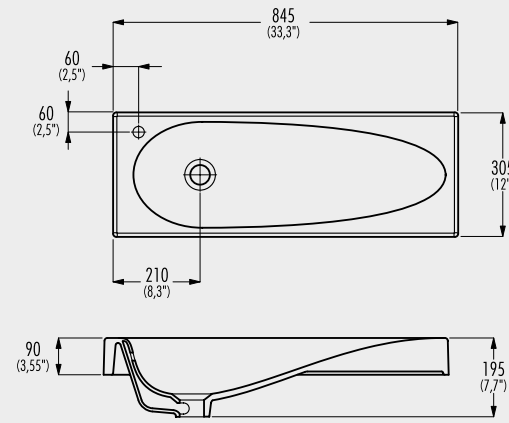


ZENA

Copripiletta ceramico | Waste ceramic cover |

€ 90,00

C50328

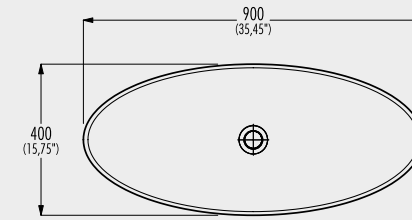


voila'

Lavabo da incasso, con troppopieno |
Built-in washbasin, with overflow |

845x305x195 | € 395,00

C53309



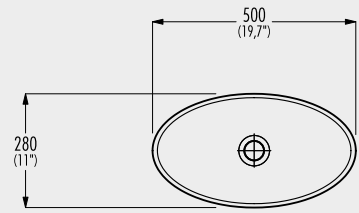
spool

SPOOL 90

Lavabo da incasso, senza troppopieno |
Built-in washbasin, without overflow |

900x400x145 | € 390,00

C53308



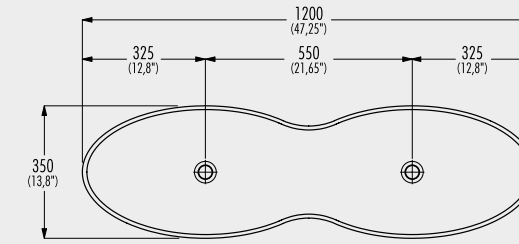
spool

SPOOL 50

Lavabo da incasso, senza troppopieno |
Built-in washbasin, without overflow |

500x280x145 | € 335,00

C53310



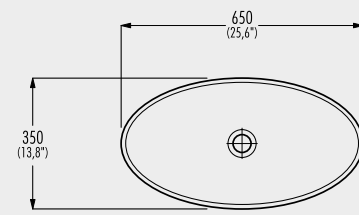
spool

SPOOL 120

Lavabo da incasso, senza troppopieno |
Built-in washbasin, without overflow |

1200x350x145 | € 750,00

C53301



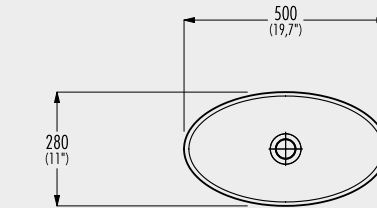
spool

SPOOL 65

Lavabo da incasso, senza troppopieno |
Built-in washbasin, without overflow |

650x350x145 | € 355,00

C53313



spool

SPOOL 50

Lavabo da incasso, senza troppopieno, nero |
Built-in washbasin, without overflow, black |

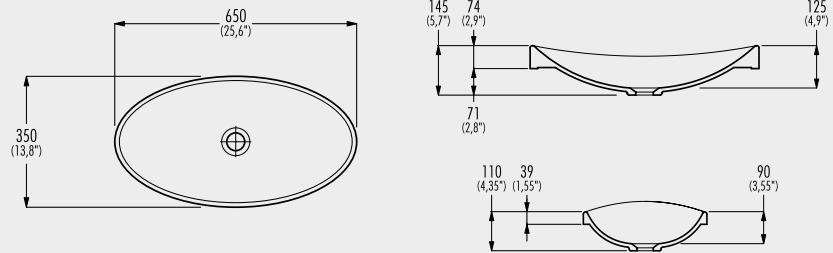
500x280x145 | € 435,00

C53311



SPOOL 65

Lavabo da incasso, senza troppopieno, nero |
Built-in washbasin, without overflow, black |



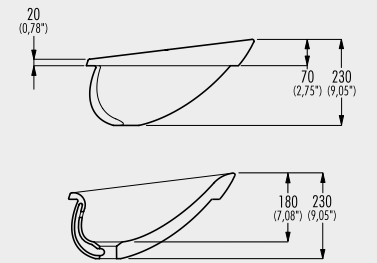
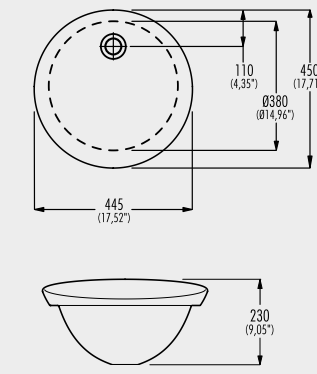
650x350xh145 | € 490,00

spool

C53303



Lavabo da incasso con troppopieno |
Built-in washbasin with overflow |



445x450xh230 | € 325,00

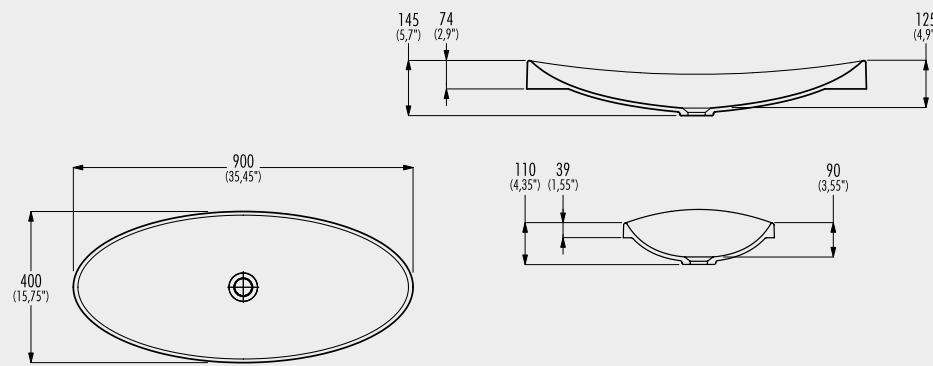
plug

C53314



SPOOL 90

Lavabo da incasso, senza troppopieno, nero |
Built-in washbasin, without overflow, black |



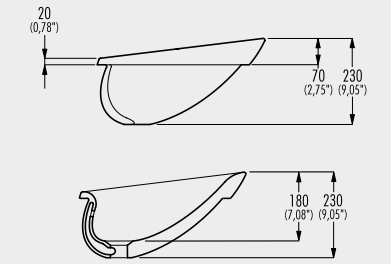
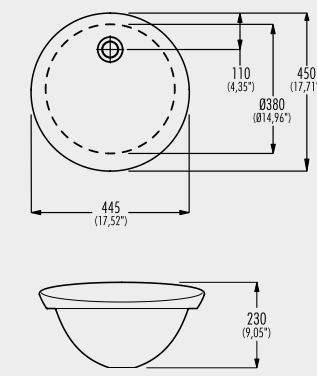
900x400xh145 | € 630,00

spool

C53304



Lavabo da incasso senza troppopieno |
Built-in washbasin without overflow |



445x450xh230 | € 315,00

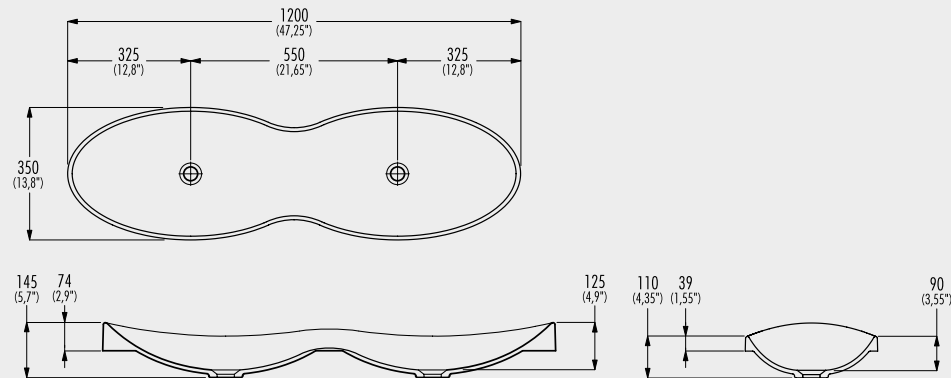
plug

C53327



SPOOL 120

Lavabo da incasso, senza troppopieno, nero |
Built-in washbasin, without overflow, black |



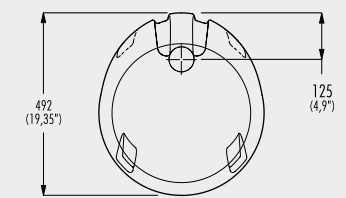
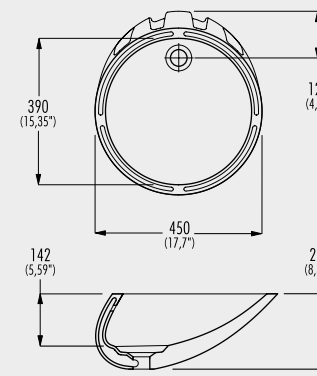
1200x350xh145 | € 990,00

spool

C51301



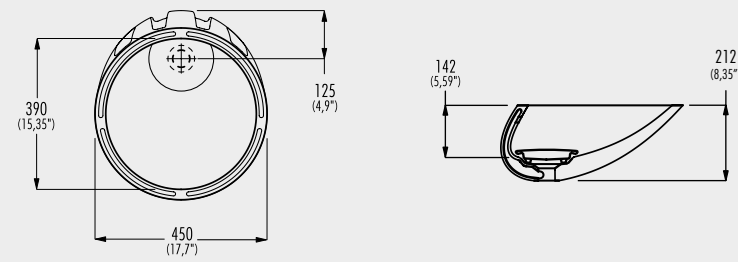
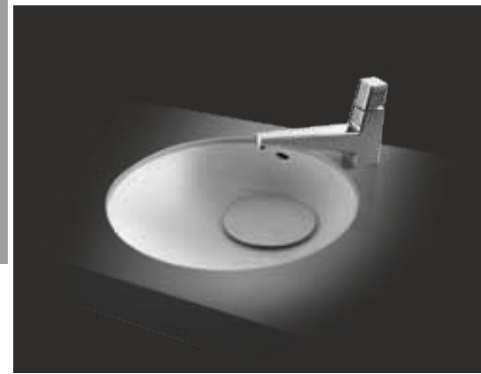
Lavabo sottopiano senza copripiletta ceramico,
con troppo pieno | Undertop washbasin without waste
ceramic cover, with overflow |



450x492xh212 | € 315,00

play

C51302

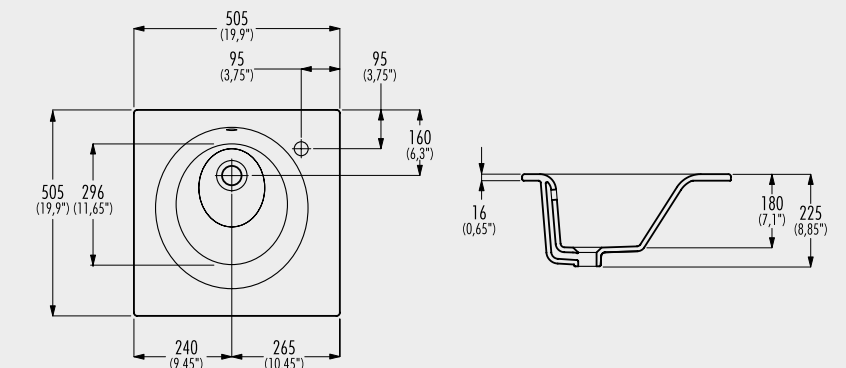
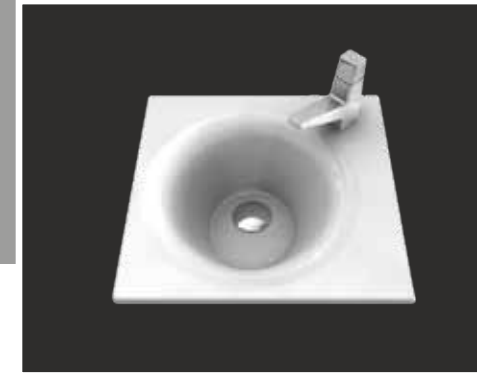


Lavabo sottopiano con copripiletta ceramico e troppo pieno | Undertop washbasin with waste ceramic cover and overflow

450x492xh212 € 335,00

play

C53316



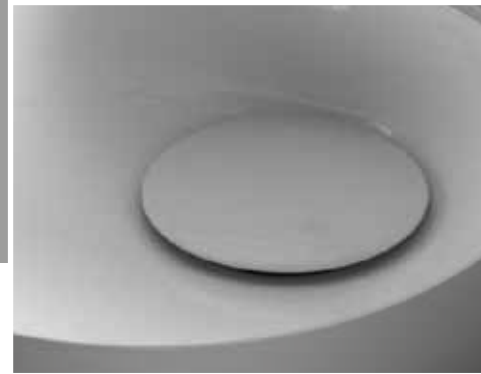
COCO' 50

Lavabo da incasso con foro rubinetteria e troppopieno | Built-in washbasin washbasin with taphole and overflow

505x505xh225 € 145,00

COCO'

C50326

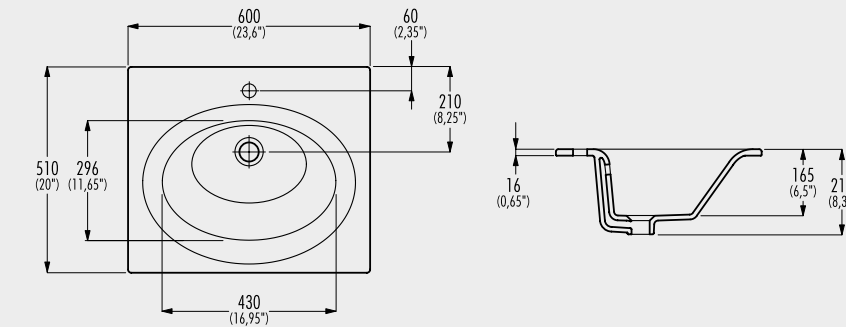


Copripiletta ceramico | Waste ceramic cover

€ 90,00

play

C53317



COCO' 60

Lavabo da incasso con foro rubinetteria e troppopieno | Built-in washbasin washbasin with taphole and overflow

600x510xh211 € 170,00

COCO'

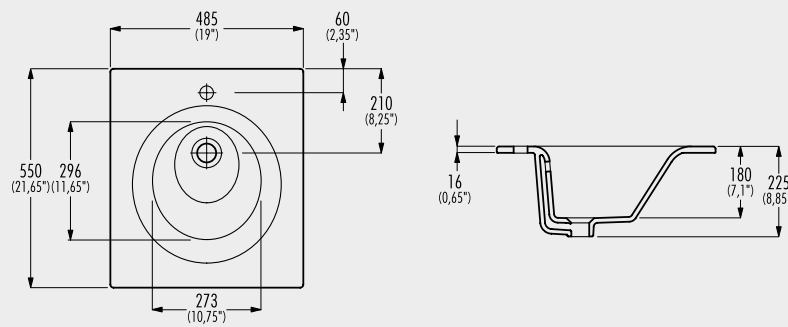
C53315



COCO' 48

Lavabo da incasso con foro rubinetteria e troppopieno | Built-in washbasin washbasin with taphole and overflow

485x550xh225 € 130,00



COCO'

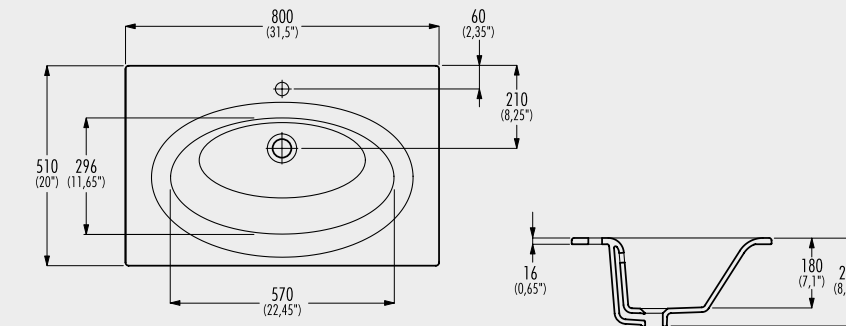
C53318



COCO' 80

Lavabo da incasso con foro rubinetteria e troppopieno | Built-in washbasin washbasin with taphole and overflow

800x510xh226 € 195,00



COCO'

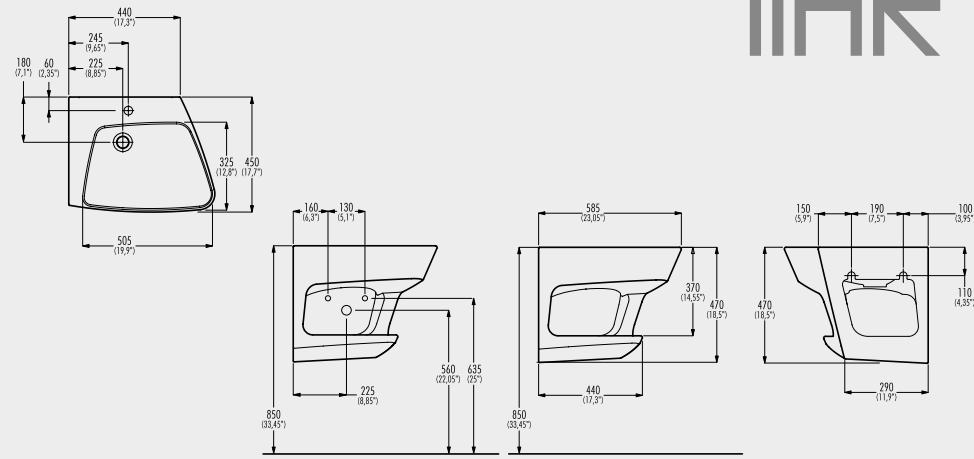
C65305



LINK LEFT

Lavabo da parete con ripiano, foro rubinetteria e troppopieno |
Wall mounted washbasin with integrated lower shelf, with taphole and overflow |

585x450xh470 € 1.045,00



link

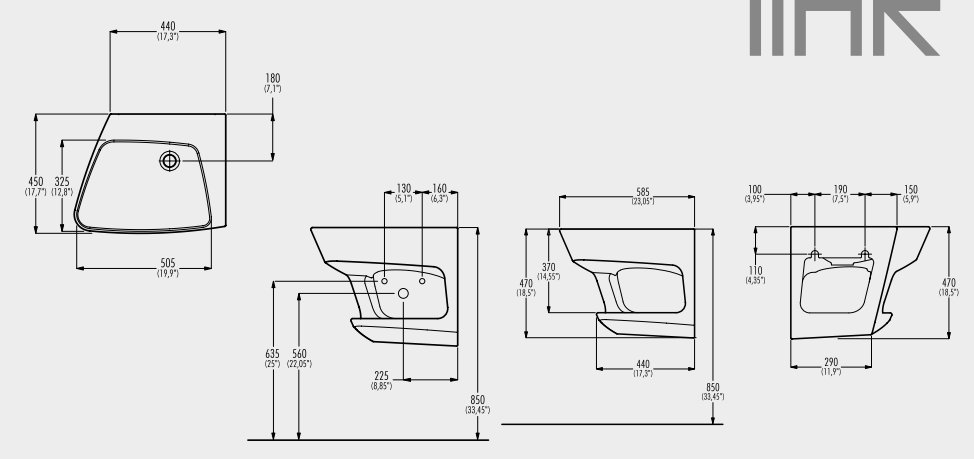
C65308



LINK RIGHT

Lavabo da parete senza foro rubinetteria, con ripiano, senza troppopieno | Wall mounted washbasin without taphole, with integrated lower shelf, without overflow |

585x450xh470 € 1.040,00



link

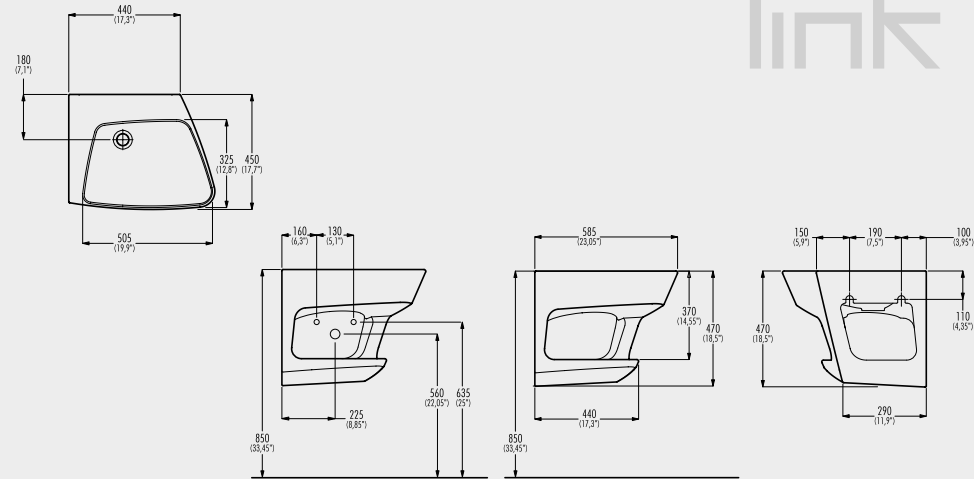
C65306



LINK LEFT

Lavabo da parete senza foro rubinetteria, con ripiano, senza troppopieno | Wall mounted washbasin without taphole, with integrated lower shelf, without overflow |

585x450xh470 € 1.040,00



link

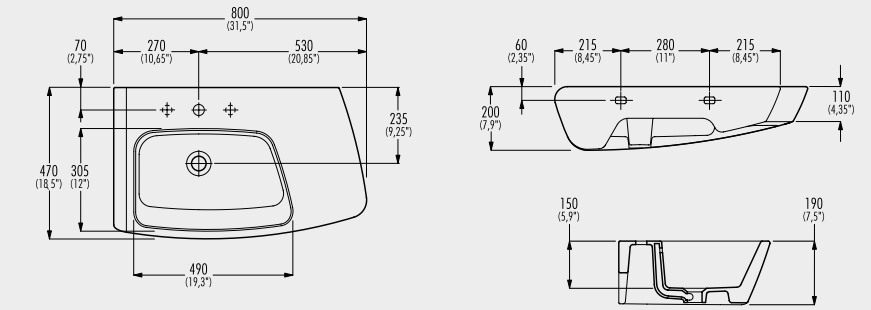
C65311



LAN LEFT

Lavabo da parete con foro rubinetteria e troppopieno | Wall mounted washbasin with taphole and overflow |

800x470xh200 € 470,00



lan

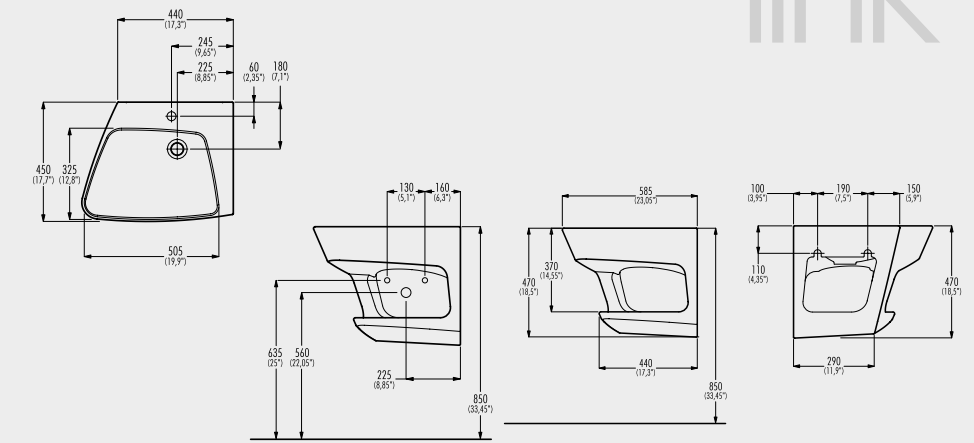
C65307



LINK RIGHT

Lavabo da parete con ripiano, foro rubinetteria e troppopieno | Wall mounted washbasin with integrated lower shelf, with taphole and overflow |

585x450xh470 € 1.045,00



link

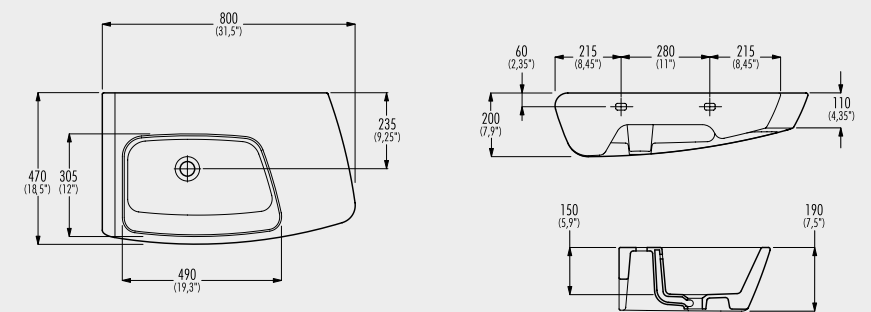
C65312



LAN LEFT

Lavabo da parete senza foro rubinetteria, con troppopieno | Wall mounted washbasin without taphole, with overflow |

800x470xh200 € 465,00



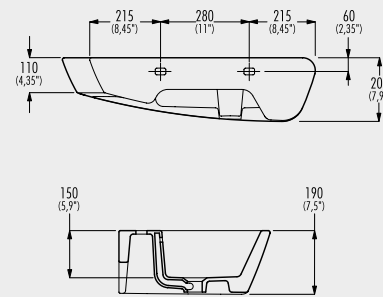
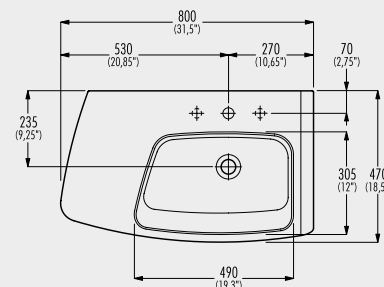
lan

C65309



LAN RIGHT

Lavabo da parete con troppo pieno | Wall mounted washbasin with overflow



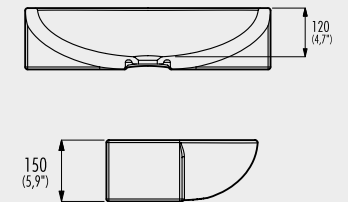
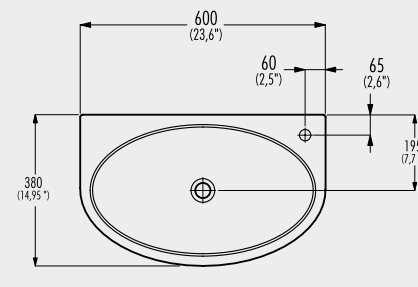
800x470xh200 | € 470,00

lan

C65315



Lavabo da parete con foro rubinetteria e troppopieno | Wall mounted washbasin with taphole and overflow



600x380xh150 | € 395,00

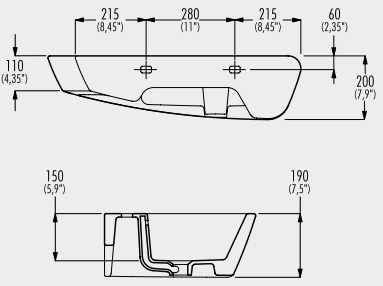
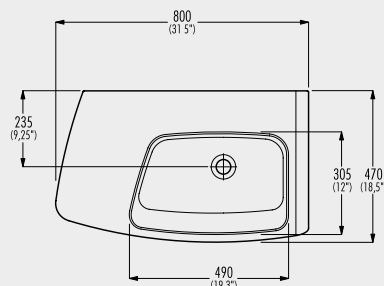
brit

C65310



LAN RIGHT

Lavabo da parete senza foro rubinetteria, con troppopieno | Wall mounted washbasin without taphole, with overflow



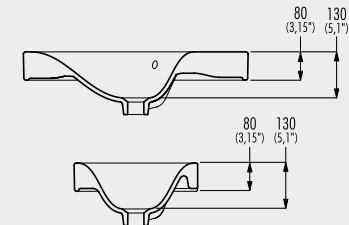
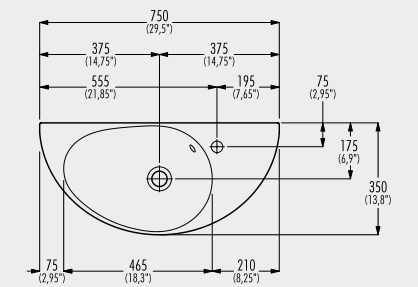
800x470xh200 | € 465,00

lan

C50301



Lavabo da parete e da appoggio con foro rubinetteria e troppopieno | Wall/top mounted washbasin with taphole and overflow



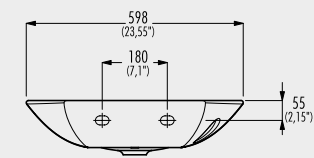
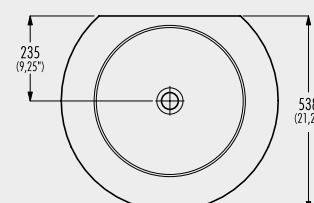
750x350xh175 | € 395,00

blot

C52307



Lavabo da parete con foro rubinetteria e troppopieno | Wall mounted washbasin with taphole and overflow



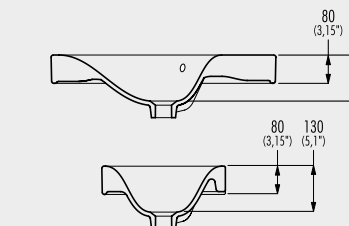
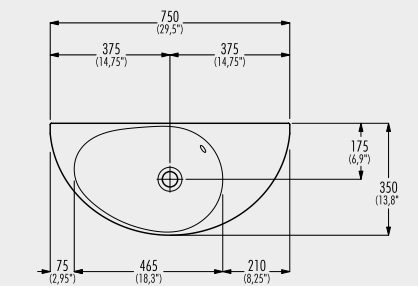
598x538xh150 | € 395,00

troc

C50302



Lavabo da parete e da appoggio senza foro rubinetteria, con troppopieno | Wall/top mounted washbasin without taphole, with overflow



750x350xh175 | € 390,00

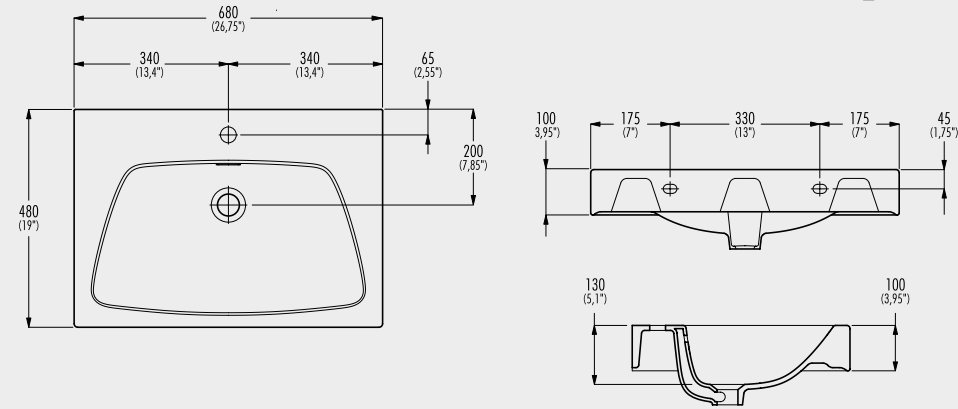
blot

C52308



SNAP 70

Lavabo da parete e da appoggio con foro rubinetteria e troppopieno | Wall/top mounted washbasin with taphole and overflow |



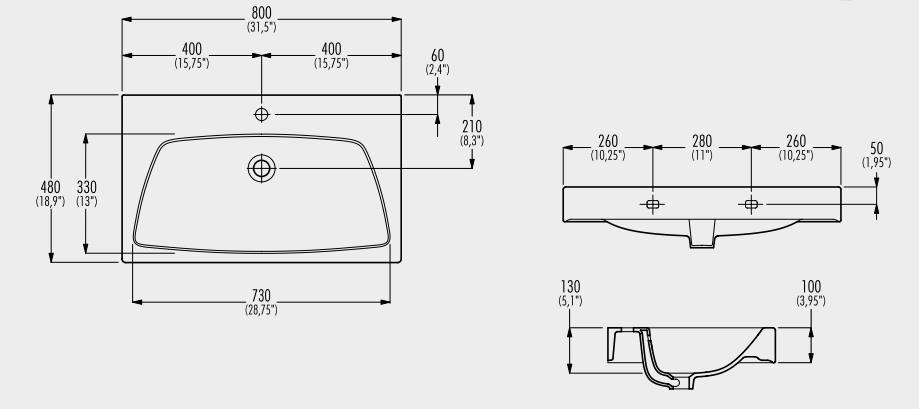
680x480xh175 € 355,00

C52301



SNAP 80

Lavabo da parete e da appoggio con foro rubinetteria e troppopieno | Wall/top mounted washbasin with taphole and overflow |



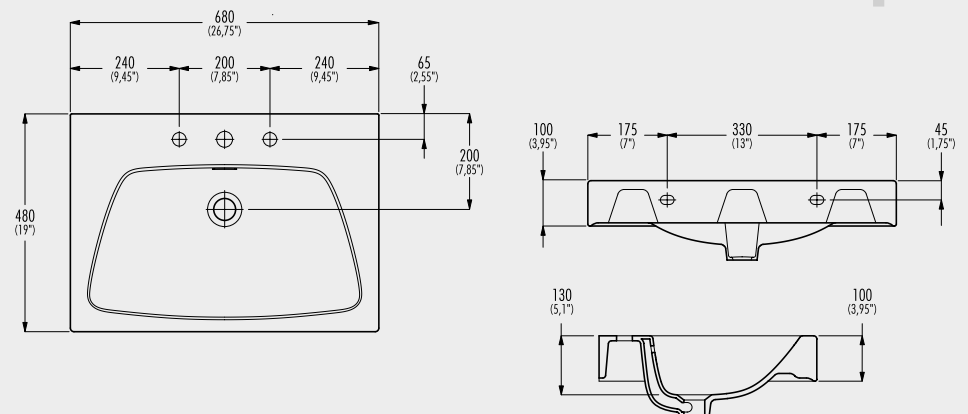
800x480xh175 € 450,00

C52309



SNAP 70

Lavabo da parete e da appoggio con tre fori rubinetteria e troppopieno | Wall/top mounted washbasin with three tapholes and overflow |

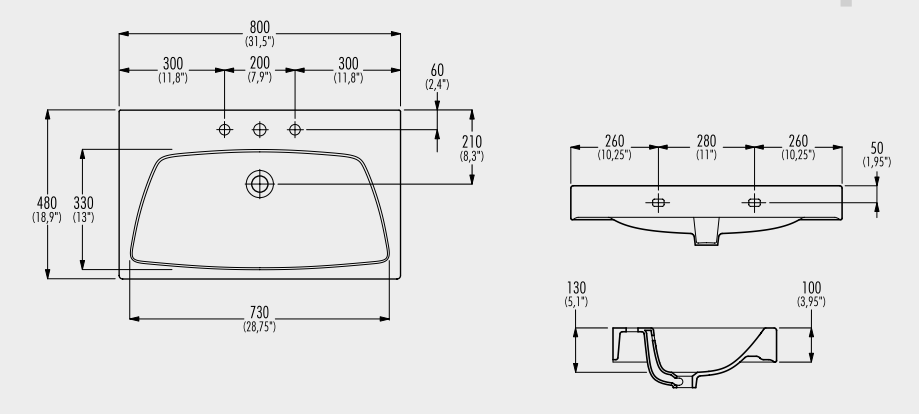


680x480xh175 € 360,00

C52302



Lavabo da parete e da appoggio con tre fori rubinetteria e troppopieno | Wall/top mounted washbasin with three tapholes and overflow |



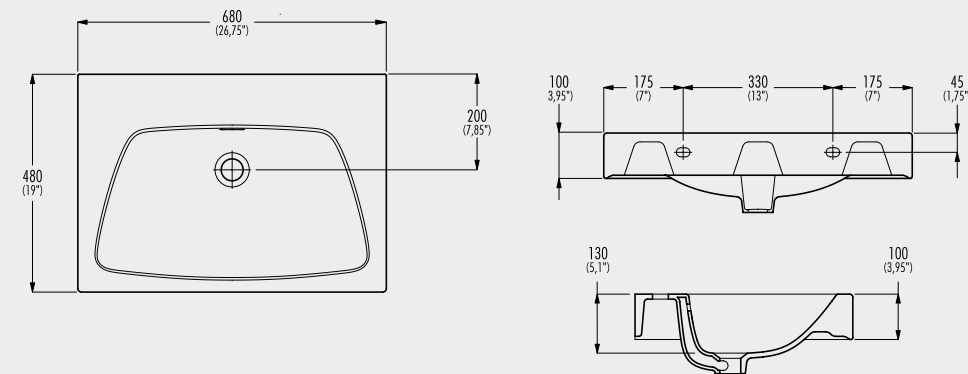
800x480xh175 € 455,00

C52310



SNAP 70

Lavabo da parete e da appoggio senza foro rubinetteria, con troppopieno | Wall/top mounted washbasin without taphole, with overflow |

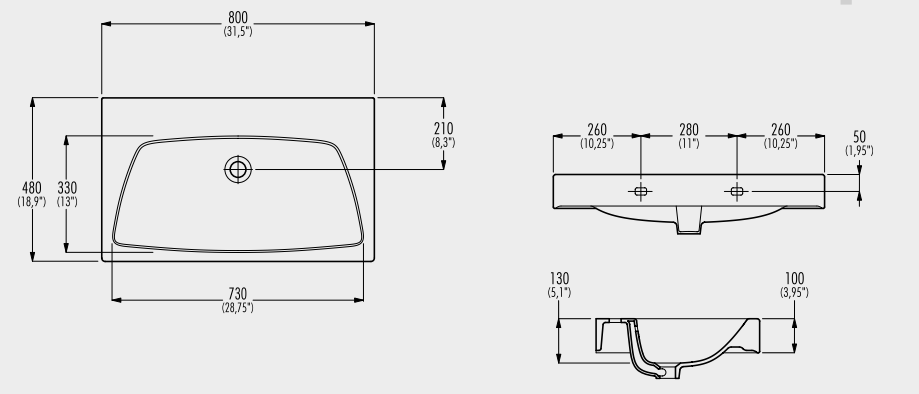


680x480xh175 € 350,00

C52303

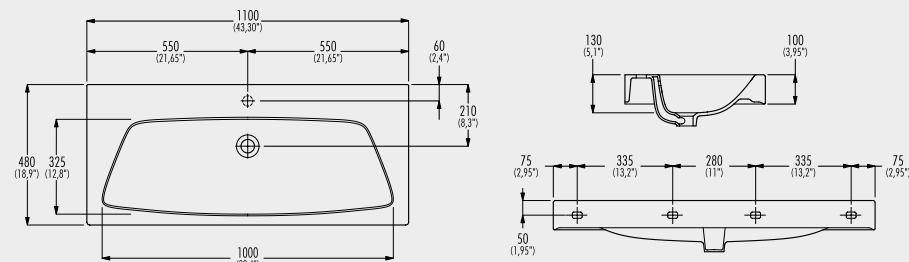


Lavabo da parete e da appoggio senza foro rubinetteria, con troppopieno | Wall/top mounted washbasin without taphole, with overflow |



800x480xh175 € 445,00

C52304



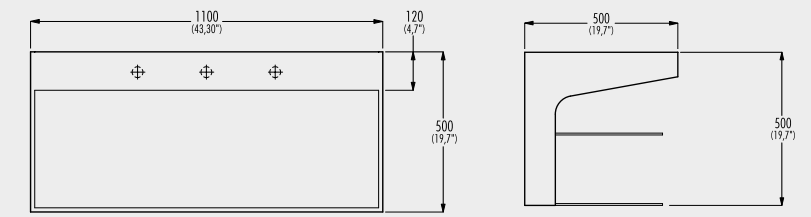
snap

SNAP 110

Lavabo da parete e da appoggio con foro rubinetteria e troppopieno | Wall/top mounted washbasin with taphole and overflow |

1100x480xh175 € 625,00

H52301



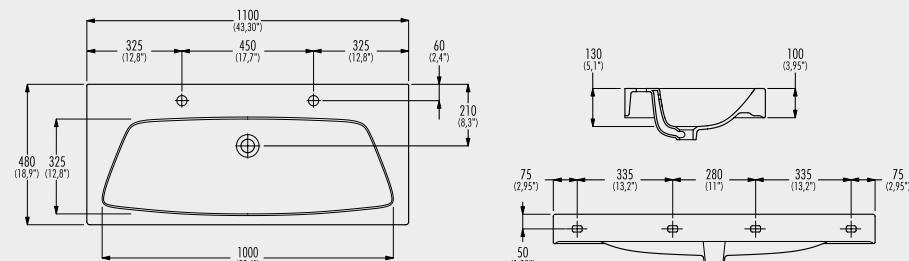
avi

AVI 110

Lavabo da parete in Corian® con due fori rubinetteria, scarico occultato, ripiani in vetro, senza troppopieno | Wall mounted washbasin in Corian® with two tapholes, hidden outlet valve, glass shelves, without overflow |

1100x500xh500 € 3.500,00

C52305

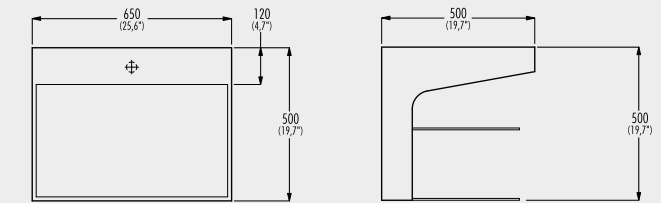


snap

Lavabo da parete e da appoggio con due fori rubinetteria e troppopieno | Wall/top mounted washbasin with two tapholes and overflow |

1100x480xh175 € 630,00

H52302



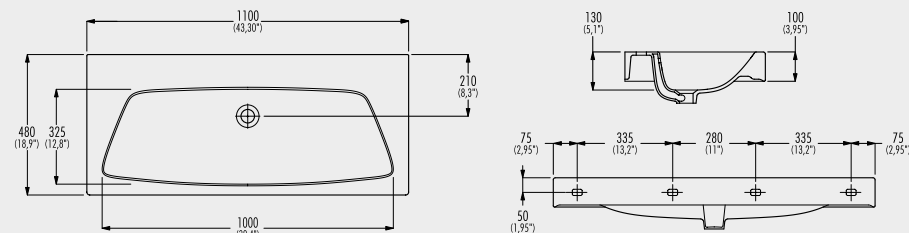
avi

AVI 65

Lavabo da parete in Corian® con foro rubinetteria, scarico occultato, ripiani in vetro, senza troppopieno | Wall mounted washbasin in Corian® with taphole, hidden outlet valve, glass shelves, without overflow |

650x500xh500 € 3.200,00

C52306

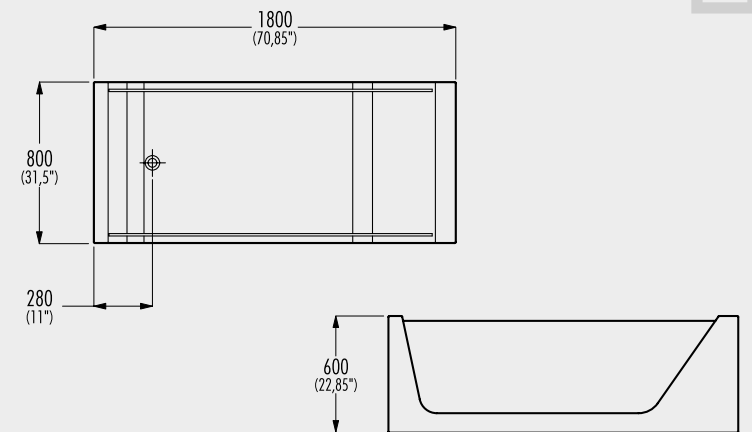


snap

Lavabo da parete e da appoggio senza foro rubinetteria, con troppopieno | Wall/top mounted washbasin without taphole, with overflow |

1100x480xh175 € 620,00

H57101

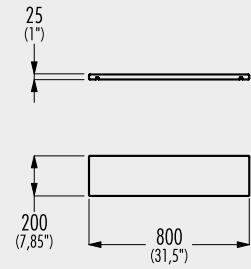


avi

Vasca da bagno in Corian® e vetro | Bathtub in Corian® and glass |

1800x800xh600 € 9.990,00

H57701

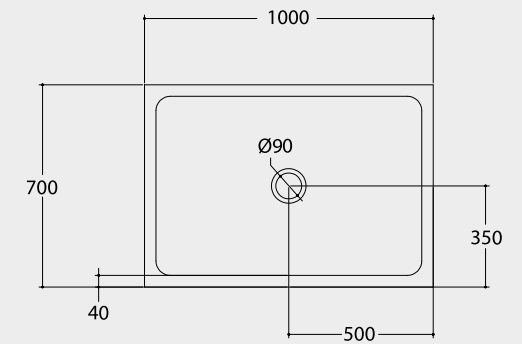


Mensola in Corian® | Corian® shelf |

800x200x25 | € 790,00

avi

C62212

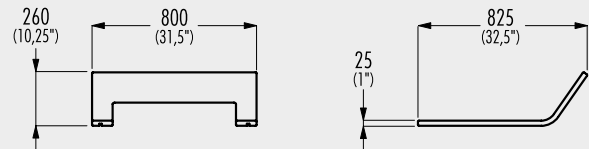


Piatto doccia filo pavimento con antiscivolo bianco |
Floor level shower tray with white anti-slip |

1000x700x40 | € 495,00

kubik

H57702

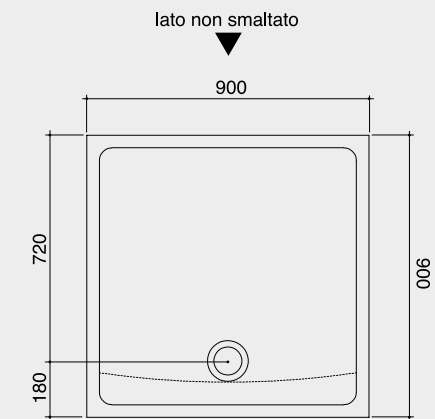


Poggiatesta in Corian® | Corian® headrest |

800x260x25 | € 1.500,00

avi

C62213

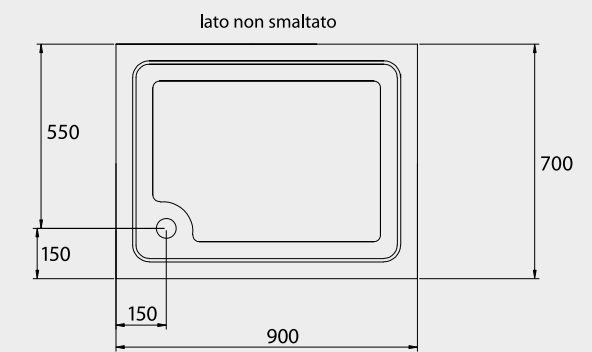


Piatto doccia filo pavimento con antiscivolo bianco |
Floor level shower tray with white anti-slip |

900x900x40 | € 470,00

kubik

C62214

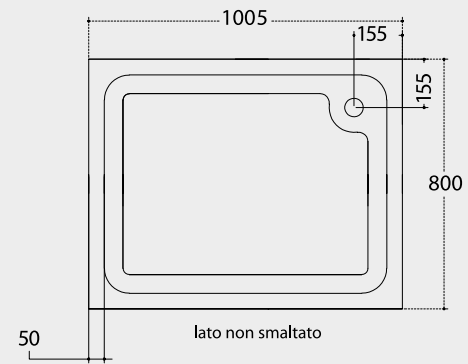


Piatto doccia con antiscivolo mosaico |
Shower tray with mosaic anti-slip |

900x700x60 | € 390,00

kubik

C62215

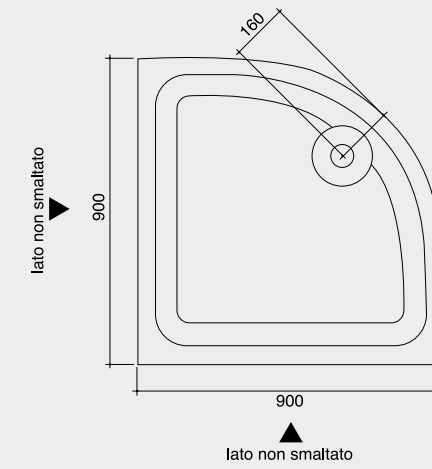


Piatto doccia con antiscivolo mosaico |
Shower tray with mosaic anti-slip |

1000x800xh60 | € 440,00

kubik

C62218

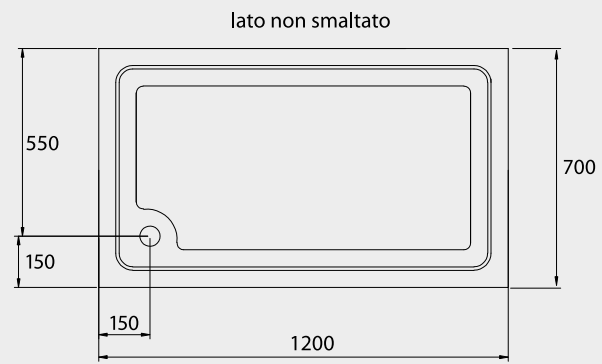


Piatto doccia angolare con antiscivolo mosaico |
Angular shower tray with mosaic anti-slip |

900x900xh60 | € 390,00

kubik

C62216

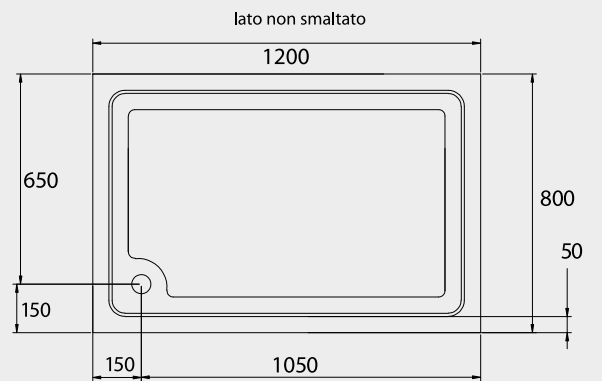


Piatto doccia con antiscivolo mosaico |
Shower tray with mosaic anti-slip |

1200x700xh60 | € 510,00

kubik

C62217



Piatto doccia con antiscivolo mosaico |
Shower tray with mosaic anti-slip |

1200x800xh60 | € 530,00

kubik

plavisdesign

CONDIZIONI GENERALI DI VENDITA

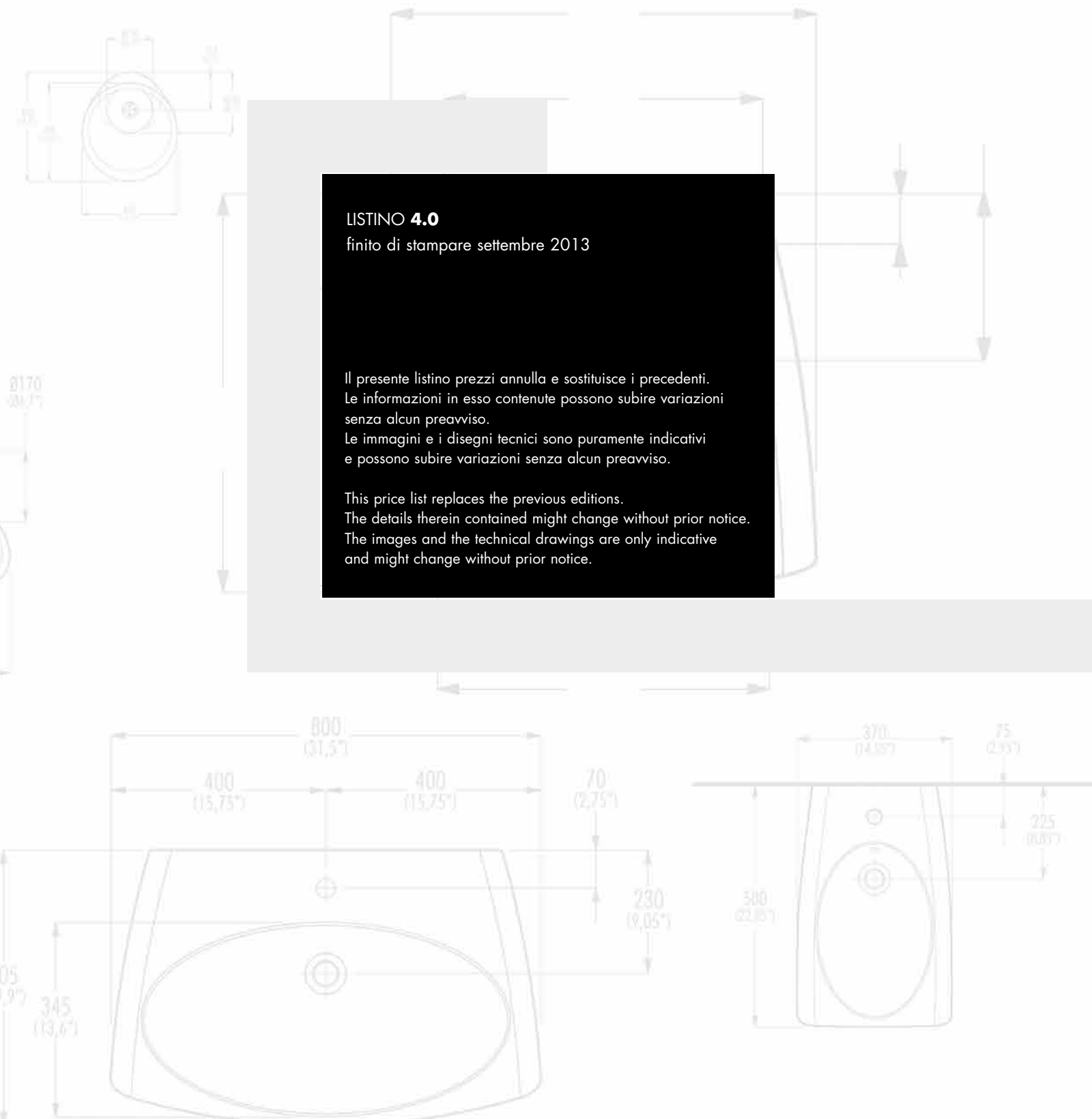
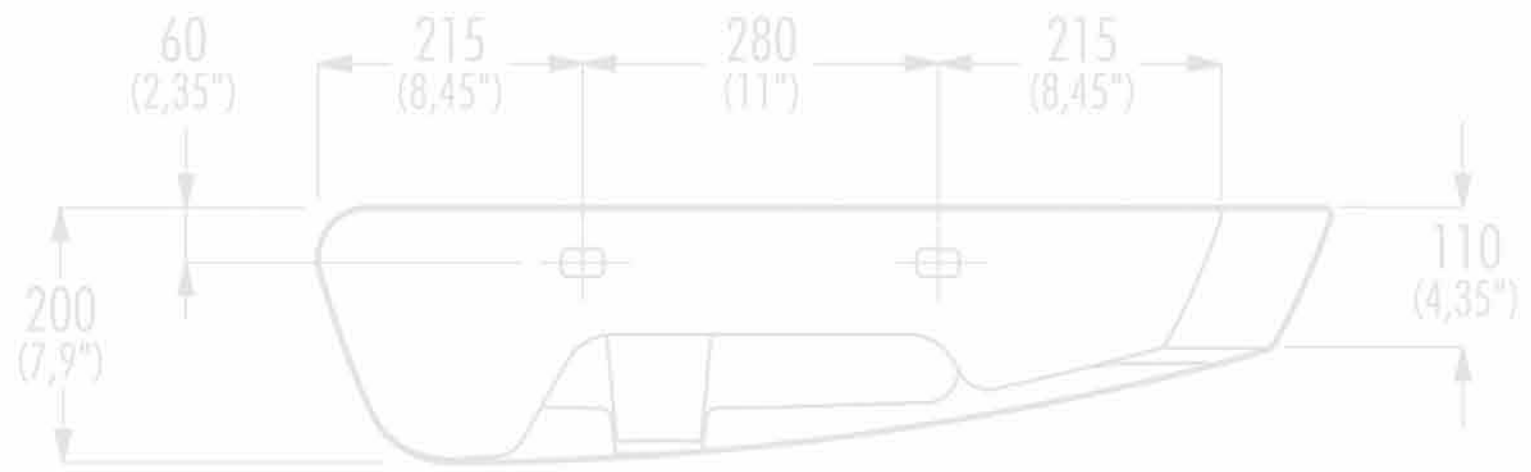
GENERAL CONDITION FOR SALE

Le presenti condizioni generali disciplinano tutti gli attuali e futuri contratti fra le parti, salvo eventuali deroghe specificatamente concordate per iscritto. Eventuali condizioni generali del compratore non troveranno applicazione nei rapporti futuri fra le parti se non espressamente accettate per iscritto dalla Plavis Design s.r.l.

- Contratto**
L'invio da parte del compratore di un ordine al venditore comporta l'applicazione al contratto di vendita delle presenti condizioni generali. Il venditore si riserva il diritto di accettare o rifiutare l'ordine ricevuto. Le offerte fatte da agenti, rappresentanti ed intermediari nominati dal venditore non sono per lui impegnative fino a quando non siano confermate dal venditore stesso.
- Prezzi**
Ai prezzi indicati nel presente listino deve essere applicata l'I.V.A. secondo l'aliquota in vigore al momento della fatturazione. Il venditore si riserva di modificare i prezzi o di variare il listino prezzi senza alcun preavviso.
- Modelli**
Il venditore si riserva la facoltà di apportare senza nessun preavviso modifiche ai modelli che riterrà opportune.
- Resa della Merce**
Salvo contrariamente pattuito, la fornitura dei prodotti si intende Franco Fabbrica del venditore: trasporto ed assicurazione sono pertanto a carico del compratore e ciò anche quando sia convenuto che la spedizione o parte di essa venga curata dal venditore, nel qual caso quest'ultimo agirà come mandatario del compratore, essendo inteso che il trasporto verrà effettuato a rischio del compratore. I rischi relativi alla fornitura passano al compratore al momento in cui i prodotti lasciano lo stabilimento del venditore.
- Termini di Consegna**
I termini di consegna si intendono approssimativi a favore del venditore e comunque con un congruo margine di tolleranza. È esclusa qualsiasi responsabilità del venditore per danni derivanti da anticipata, ritardata o mancata consegna, totale o parziale. Il compratore è sempre tenuto a prendere in consegna i prodotti, anche in caso di consegne parziali e quando i prodotti vengano consegnati prima o successivamente alla data di consegna stabilita. Il termine di consegna verrà prorogato di un periodo pari a quello della durata dell'impedimento al verificarsi di cause di forza maggiore. In nessun caso, a causa del verificarsi di tali circostanze, il compratore potrà esigere compensi o indennizzi di qualsiasi natura.
- Garanzia**
Il venditore garantisce la conformità dei prodotti forniti; con il termine di conformità dei prodotti si intende che essi corrispondono per qualità, quantità e tipo a quanto stabilito nel contratto e che sono esenti da vizi che potrebbero renderli non idonei all'uso cui sono destinati. La garanzia per vizi è limitata ai soli difetti dei prodotti conseguenti a difetti di progettazione o di costruzione riconducibili al venditore e non si applica nel caso in cui il compratore non provi di aver effettuato una corretta conservazione dei prodotti e di non averli modificati senza il consenso del venditore. Il venditore non risponde dei difetti di conformità dei prodotti dovuti all'usura normale di quelle parti che, per loro natura sono soggette a usura rapida e continua.
- Reclami**
Il compratore è tenuto a verificare la conformità dei prodotti e l'assenza di vizi. I reclami relativi a non conformità dei prodotti forniti dovranno essere effettuati, a pena di decadenza, entro e non oltre quindici giorni dal ricevimento della merce a destino. I vizi, difetti o non conformità occulti devono essere denunciati immediatamente alla loro scoperta e comunque, a pena di decadenza, entro e non oltre sei mesi dalla data di consegna. Tutti i reclami devono essere effettuati mediante lettera raccomandata indirizzata al venditore e devono indicare dettagliatamente i vizi e le non conformità contestate con prove documentali. La garanzia ha una durata di sei mesi.
- Rimedi**
In caso di Prodotti non conformi, e dopo aver ricevuto un rapporto dettagliato dal compratore, il venditore potrà, a sua insindacabile scelta:
a) fornire gratuitamente Franco Fabbrica al compratore prodotti dello stesso genere e quantità di quelli risultanti difettosi o non conformi a quanto pattuito, oppure le sole parti difettose dello stesso dopo averne ottenuto la resa per la verifica. La eventuale sostituzione effettuata prontamente dal venditore non può essere ritenuta un implicito riconoscimento dei vizi contestati: detto riconoscimento dovrà essere sempre esplicito e conseguente al controllo del venditore sui prodotti contestati. Qualora il venditore, in sede di verifica, non riconosca viziati i prodotti, provvederà alla fatturazione di quelli inviati in sostituzione; oppure
b) emettere una nota di accredito a favore del compratore per un importo corrispondente al valore dei prodotti difettosi. In entrambi i casi il venditore ha diritto alla restituzione dei prodotti difettosi, che diventano di sua proprietà.
- Limitazione di responsabilità del venditore**
Salvo dolo o colpa grave del venditore l'eventuale risarcimento di qualsiasi danno al compratore non potrà comunque superare il prezzo di fattura dei prodotti contestati.
- Pagamento**
I pagamenti ed ogni altra somma dovuta a qualsiasi titolo al venditore si intendono netti al suo domicilio. Qualsiasi ritardo o irregolarità nel pagamento dà al venditore il diritto di sospendere la fornitura o di risolvere contratti in corso, anche non relativi ai pagamenti in questione, nonché il diritto al risarcimento degli eventuali danni. Il venditore ha altresì il diritto a decorrere dalla scadenza del pagamento, agli interessi moratori nella misura stabilita in Italia dall'art. 5 del Decreto Legislativo 9 ottobre 2002, n. 231. Il ritardo nei pagamenti dà altresì al venditore il diritto di escludere la garanzia per tutto il periodo durante il quale il ritardo perdura.
- Riserva di proprietà**
I prodotti consegnati restano di proprietà del venditore sino al momento del completo pagamento del prezzo.
- Legge applicabile e foro competente**
Tutti i contratti disciplinati dalle presenti condizioni generali sono regolati dalla legge italiana. Per ogni controversia relativa o comunque collegata ai contratti cui si applicano le presenti condizioni generali è esclusivamente competente il foro del venditore; quest'ultimo avrà tuttavia facoltà di agire presso il foro del compratore.

These general conditions regulate all present and future sales contracts between the parties, subject to any exceptions specifically agreed upon in writing. Any general conditions of the purchaser will not apply to future contractual relations between the parties unless expressly accepted in writing by Plavis Design s.r.l.

- Formation of the Contract**
The purchaser placing the order fully accepts the application of these general terms to the Contract for sale. Seller reserves the right to accept or refuse it. Offers made by Agents, Representatives or auxiliaries of the seller do not bind him until they are confirmed by the seller itself.
- Prices**
The prices indicated in this price list do not include V.A.T. or any other tax whatsoever. Seller may modify the prices/price list without prior notice.
- Patterns**
The supplier reserves the right of modifying the patterns and designs without any notice.
- Surrender of the goods**
Unless agreed to the contrary, the supply of the products is intended ex-factory: transport and insurance are therefore at the charge of the purchaser, this also when it is decided that the delivery or part of it will be taken care of by the seller, in which case the latter will act as the purchaser's agent, it being understood that the transport will be carried out at the expense and risk of the purchaser. The risks relative to the supply pass to the purchaser, at the latest at the time in which the products leave the seller's plant.
- Delivery terms**
The delivery limits are agreed approximately in favour of the seller and not binding for him. Any liability of the seller is excluded for damage deriving from anticipated, delayed or non delivery, total or partial. The purchaser is always held to take delivery of the products, even in the case of partial deliveries and even when the products are consigned before the established delivery date or successively to that date. The seller shall not be deemed to be in breach of this agreement, or otherwise be liable to the purchaser, by reason of any delay in delivery, to the extent that the delay is due to any Force Majeure, and the time for performance of delivery shall be extended accordingly.
- Guarantee**
The seller guarantees the compliance of the products supplied; by the term compliance of the products it is meant that they correspond in quality, quantity and type to what was agreed in the contract and that they are without defects that could render them unfit for the use to which they are intended to be put. The guarantee against defects is limited only to product defects due to defects in planning or construction that can be attributed to the seller, and does not apply in the case where the purchaser is unable to prove a correct preservation of the product and where he has modified them without the agreement of the seller. The seller is not liable for defects in product compliance due to the normal wear of those parts which, by nature, are subject to rapid and continuous wear and tear. Also the guarantee does not apply in case the producer's recommendation are not respected.
- Producer's recommendation**
It is recommended to install a centralized filter, and carry the maintenance in order not to expose the taps and the mixer to the impurity of the water. It is recommended the installation of pressure reducers in cases where the working pressure is more than 5 Hg/cm2
- Remedies**
In case of faulty products and following to a report by the purchaser, the seller may at his discretion:
a) supply ex-factory to the purchaser products of the same kind and quantity as those that proved not in compliance, on receiving returns for checking. Any replacement carried out promptly by the seller cannot be considered as implicit recognition of defects claimed: said recognition must always be explicit and following control by seller on goods challenged; should the seller, on controlling, find the goods in compliance he will invoice for those sent in replacement, or
b) issue to the purchaser a credit-note in the amount equal to the value of the defective products. In both cases the purchaser shall return the faulty products to the seller.
- Limit of the seller's liability**
Except in the case of fraud or gross negligence on the seller's part, compensation of any damage to the purchaser will not, in any event, be greater than invoice price of the disputed products.
- Payments**
The payment and every other sum due to the seller, are understood as net at the registered office of the seller. Any delay or irregularity in the payment gives the seller the right to suspend the supply or to cancel the contract in course, even if they are not relevant to the payments in question, as well as the right to compensation for eventual damages. The seller has also the right - starting from the payment deadline - to interests for delay as per art. 5 of Italian Legislative Decree no. 231 of 9/10/2002. The delays of payment likewise give the seller the right to exclusion from guarantee, for the whole period that the delay may persist.
- Retention of Title**
The delivered products remain the seller's property until the moment of the complete payment of the price.
- Applicable Law and Competent Law-Court**
All Contracts ruled by these general conditions are submitted to Italian Law. For any controversy relative to, or connected to the contractual products to which this general conditions apply, the seller's Law-Court has the exclusive competence; the latter, however, will have the opportunity to act also in the purchaser's Law-Court.

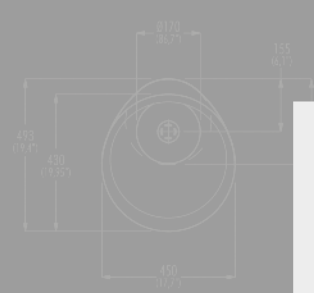


LISTINO 4.0
finito di stampare settembre 2013

Il presente listino prezzi annulla e sostituisce i precedenti. Le informazioni in esso contenute possono subire variazioni senza alcun preavviso. Le immagini e i disegni tecnici sono puramente indicativi e possono subire variazioni senza alcun preavviso.

This price list replaces the previous editions. The details therein contained might change without prior notice. The images and the technical drawings are only indicative and might change without prior notice.

plavisdesign



PLAVISDESIGN
Via Caselle, 22 - 25125 Brescia - Italy
tel +39.0374.74141
fax +39.0374.74524
info@plavisdesign.it
www.plavisdesign.it

